

# Burwood LGA

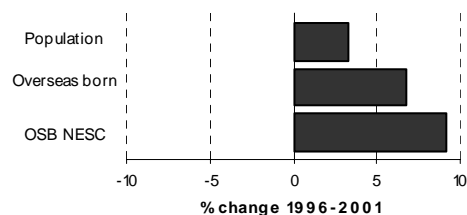
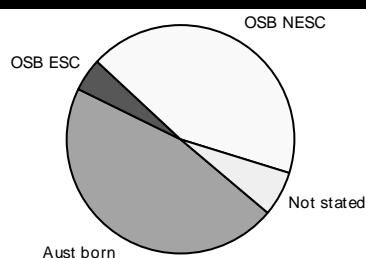


Table 3.9.1

Summary Indicators	2001	% of	1996	Change	% change
	Census	population	Census	1996-2001	
Population	29,292	100.0	28,355	937	3.3
Australian born	13,483	46.0	14,289	-806	-5.6
Overseas born	13,911	47.5	13,031	880	6.8
Birthplace not stated	1,898	6.5	1,027	871	84.8
Overseas born - English speaking countries	1,411	4.8	1,576	-165	-10.5
Overseas born - non-English speaking countries	12,500	42.7	11,455	1,045	9.1
Aboriginal and/or Torres Strait Islanders	110	0.4	103	7	6.8
Language other than English spoken at home	15,461	52.8	14,248	1,213	8.5
Overseas born arrived since 1996	3,565	12.2			
Overseas born arrived since 1996 from NESC	3,209	11.0			

Table 3.9.2

## Overseas Born: Birthplace by Gender, 2001 and 1996 Census

Birthplace	Males	Females	Persons	% of OSB	1996	Change	% change
					Census	1996-2001	
China (excl. SARs and Taiwan)	1,031	1,245	2,276	16.4	1,614	662	41.0
Korea, Republic of (South)	674	808	1,482	10.7	1,061	421	39.7
Italy	666	677	1,343	9.7	1,494	-151	-10.1
Lebanon	379	347	726	5.2	832	-106	-12.7
India	433	247	680	4.9	355	325	91.5
Hong Kong (SAR of China)	290	315	605	4.3	657	-52	-7.9
Greece	252	270	522	3.8	567	-45	-7.9
Viet Nam	229	249	478	3.4	369	109	29.5
England	254	213	467	3.4	581	-114	-19.6
New Zealand	233	216	449	3.2	430	19	4.4
Sri Lanka	147	139	286	2.1	312	-26	-8.3
Philippines	89	170	259	1.9	292	-33	-11.3
Croatia	128	129	257	1.8	274	-17	-6.2
Ireland	118	79	197	1.4	244	-47	-19.3
Taiwan	77	116	193	1.4	190	3	1.6
Poland	79	94	173	1.2	195	-22	-11.3
Indonesia	75	94	169	1.2	137	32	23.4
Malaysia	82	87	169	1.2	159	10	6.3
Burma (Myanmar)	75	70	145	1.0	166	-21	-12.7
Fiji	60	71	131	0.9	144	-13	-9.0
Egypt	64	61	125	0.9	176	-51	-29.0
Yugoslavia, Federal Republic of	57	67	124	0.9	n.c.	n.c.	n.c.
Germany	50	60	110	0.8	112	-2	-1.8
Scotland	54	55	109	0.8	141	-32	-22.7
Thailand	50	52	102	0.7	74	28	37.8
Nepal	79	20	99	0.7	57	42	73.7
Portugal	46	49	95	0.7	80	15	18.8
Cyprus	43	51	94	0.7	89	5	5.6
Turkey	49	45	94	0.7	94	0	0.0
Chile	43	44	87	0.6	80	7	8.8
Other birthplaces	953	912	1,865	13.4	n.c.	n.c.	n.c.
<b>Total overseas born</b>	<b>6,859</b>	<b>7,052</b>	<b>13,911</b>	<b>100.0</b>	<b>13,031</b>	<b>880</b>	<b>6.8</b>

## Burwood LGA

(continued)

Table 3.9.3

### Birthplace by Age: Selected Birthplace Groups, 2001 Census

Percentage in age group of each birthplace - total expressed as a number

Birthplace	Age 0-12	Age 13-24	Age 25-54	Age 55-64	Age 65+	Total
China (excl. SARs and Taiwan)	4.1	17.4	55.8	6.2	16.6	2,276
Korea, Republic of (South)	8.6	23.5	59.7	4.5	3.6	1,482
Italy	0.4	0.5	31.6	24.7	42.7	1,343
Lebanon	1.1	5.4	61.4	16.9	15.2	726
India	5.4	21.6	62.8	3.7	6.5	680
Hong Kong (SAR of China)	2.3	37.0	52.4	5.0	3.3	605
Greece	0.6	1.1	30.4	36.3	31.5	522
Viet Nam	0.6	12.3	74.3	6.1	6.7	478
England	2.6	6.4	51.6	15.6	23.8	467
New Zealand	11.1	17.8	59.5	6.0	5.6	449

Table 3.9.4

### Languages other than English Spoken at Home by Gender, 2001 and 1996 Census

Language	Males	Females	Persons	% of LOTE speakers	1996	Change	% change
					Census	1996-2001	
Cantonese	1,055	1,225	2,280	14.7	1,978	302	15.3
Italian	1,070	1,099	2,169	14.0	2,376	-207	-8.7
Arabic	862	822	1,684	10.9	1,844	-160	-8.7
Mandarin	787	885	1,672	10.8	943	729	77.3
Korean	722	864	1,586	10.3	1,150	436	37.9
Greek	600	625	1,225	7.9	1,216	9	0.7
Croatian	178	196	374	2.4	445	-71	-16.0
Spanish	146	169	315	2.0	416	-101	-24.3
Tamil	150	141	291	1.9	267	24	9.0
Russian	100	169	269	1.7	291	-22	-7.6
Vietnamese	118	150	268	1.7	136	132	97.1
Hindi	169	98	267	1.7	159	108	67.9
Tagalog (Filipino)	72	127	199	1.3	238	-39	-16.4
Polish	84	103	187	1.2	211	-24	-11.4
Chinese, nfd	91	79	170	1.1	262	-92	-35.1
Indonesian	66	69	135	0.9	95	40	42.1
Burmese	62	61	123	0.8	126	-3	-2.4
Portuguese	55	65	120	0.8	103	17	16.5
Bengali	73	42	115	0.7	42	73	173.8
Thai	52	47	99	0.6	63	36	57.1
Nepali	78	20	98	0.6	54	44	81.5
Tongan	51	47	98	0.6	108	-10	-9.3
French	37	47	84	0.5	101	-17	-16.8
Turkish	49	34	83	0.5	79	4	5.1
German	41	40	81	0.5	137	-56	-40.9
Telugu	59	21	80	0.5	32	48	150.0
Hungarian	36	41	77	0.5	86	-9	-10.5
Serbian	28	49	77	0.5	88	-11	-12.5
Urdu	46	25	71	0.5	44	27	61.4
Japanese	27	41	68	0.4	50	18	36.0
Other languages	578	518	1,096	7.1	1,108	-12	-1.1
<b>Total LOTE speakers</b>	<b>7,542</b>	<b>7,919</b>	<b>15,461</b>	<b>100.0</b>	<b>14,248</b>	<b>1,213</b>	<b>8.5</b>

## Burwood LGA

(continued)

Table 3.9.5

### English Language Competency by Age: Selected Language Groups, 2001 Census

Language	Age 0-12	Age 13-24	Age 25-54	Age 55-64	Age 65+	Total
<b>Cantonese</b>						
Speak English well/very well	233	458	760	57	58	1,566
Speak English not well/not at all	64	47	292	71	213	687
<b>Total including not stated</b>	<b>304</b>	<b>509</b>	<b>1,059</b>	<b>131</b>	<b>277</b>	<b>2,280</b>
<i>Percent not well/not at all</i>	<i>21.1</i>	<i>9.2</i>	<i>27.6</i>	<i>54.2</i>	<i>76.9</i>	<i>30.1</i>
<b>Italian</b>						
Speak English well/very well	109	205	828	242	332	1,716
Speak English not well/not at all	18	..	44	95	248	411
<b>Total including not stated</b>	<b>133</b>	<b>214</b>	<b>885</b>	<b>344</b>	<b>593</b>	<b>2,169</b>
<i>Percent not well/not at all</i>	<i>13.5</i>		<i>5.0</i>	<i>27.6</i>	<i>41.8</i>	<i>18.9</i>
<b>Arabic</b>						
Speak English well/very well	228	384	644	107	55	1,418
Speak English not well/not at all	25	13	77	48	75	238
<b>Total including not stated</b>	<b>261</b>	<b>403</b>	<b>733</b>	<b>155</b>	<b>130</b>	<b>1,682</b>
<i>Percent not well/not at all</i>	<i>9.6</i>	<i>3.2</i>	<i>10.5</i>	<i>31.0</i>	<i>57.7</i>	<i>14.1</i>
<b>Mandarin</b>						
Speak English well/very well	153	329	608	19	13	1,122
Speak English not well/not at all	64	65	284	34	68	515
<b>Total including not stated</b>	<b>222</b>	<b>402</b>	<b>907</b>	<b>53</b>	<b>86</b>	<b>1,670</b>
<i>Percent not well/not at all</i>	<i>28.8</i>	<i>16.2</i>	<i>31.3</i>	<i>64.2</i>	<i>79.1</i>	<i>30.8</i>
<b>Korean</b>						
Speak English well/very well	137	286	453	26	11	913
Speak English not well/not at all	81	87	400	39	39	646
<b>Total including not stated</b>	<b>226</b>	<b>373</b>	<b>867</b>	<b>68</b>	<b>50</b>	<b>1,584</b>
<i>Percent not well/not at all</i>	<i>35.8</i>	<i>23.3</i>	<i>46.1</i>	<i>57.4</i>	<i>78.0</i>	<i>40.8</i>
<b>Greek</b>						
Speak English well/very well	121	140	477	150	106	994
Speak English not well/not at all	13	..	39	69	96	220
<b>Total including not stated</b>	<b>134</b>	<b>147</b>	<b>516</b>	<b>222</b>	<b>205</b>	<b>1,224</b>
<i>Percent not well/not at all</i>	<i>9.7</i>		<i>7.6</i>	<i>31.1</i>	<i>46.8</i>	<i>18.0</i>
<b>All speakers of languages other than English</b>						
Speak English well/very well	1,330	2,630	5,862	975	998	11,795
Speak English not well/not at all	352	276	1,363	448	954	3,393
<b>Total including not stated</b>	<b>1,752</b>	<b>2,951</b>	<b>7,322</b>	<b>1,448</b>	<b>1,988</b>	<b>15,461</b>
<i>Percent not well/not at all</i>	<i>20.1</i>	<i>9.4</i>	<i>18.6</i>	<i>30.9</i>	<i>48.0</i>	<i>21.9</i>

Table 3.9.6

### Ancestry by Birthplace of Parents: Selected Ancestry Groups, 2001 Census

Ancestry	Australian Born					Overseas born	Not stated birthplace	Total responses
	Both parents born in Australia	Mother Aust born/Father OSB	Father Aust born/Mother OSB	Both parents born overseas	Parent(s) birthplace not stated			
Chinese	38	44	59	724	33	3,795	114	4,807
Australian	3,056	450	332	182	105	129	119	4,373
English	2,329	433	280	268	78	705	93	4,186
Italian	357	252	114	990	39	1,396	92	3,240
Irish	1,382	219	110	99	26	392	29	2,257
Lebanese	85	118	58	606	42	697	57	1,663
Korean	..	..	..	137	..	1,400	29	1,574
Greek	161	91	28	464	33	637	35	1,449
Indian	..	..	10	86	..	781	15	902
German	206	34	21	66	..	137	..	477

**Burwood LGA***(continued)*

Table 3.9.7

**Religious Affiliation by Gender, 2001 and 1996 Census**

Religion	Males	Females	Persons	% of population	1996 Census	Change 1996-2001	% change
Catholic	5,190	5,653	10,843	37.0	11,066	-223	-2.0
No Religion	1,922	1,756	3,678	12.6	4,044	-366	-9.1
Anglican	1,323	1,476	2,799	9.6	3,258	-459	-14.1
Orthodox	976	1,085	2,061	7.0	2,062	-1	0.0
Buddhism	786	890	1,676	5.7	745	931	125.0
Uniting Church	444	583	1,027	3.5	1,067	-40	-3.7
Presbyterian & Reformed	460	532	992	3.4	1,005	-13	-1.3
Hinduism	593	371	964	3.3	605	359	59.3
Islam	307	235	542	1.9	505	37	7.3
Baptist	192	235	427	1.5	427	0	0.0
Christian, nfd	159	165	324	1.1	263	61	23.2
Religious belief, nfd	146	166	312	1.1	57	255	447.4
Pentecostal	90	130	220	0.8	209	11	5.3
Oriental Christian	102	92	194	0.7	224	-30	-13.4
Lutheran	52	58	110	0.4	139	-29	-20.9
Jehovah's Witnesses	36	57	93	0.3	92	1	1.1
Other Protestant	42	48	90	0.3	100	-10	-10.0
Salvation Army	31	57	88	0.3	97	-9	-9.3
Seventh-day Adventist	37	31	68	0.2	59	9	15.3
Judaism	26	22	48	0.2	50	-2	-4.0
Latter Day Saints	18	15	33	0.1	28	5	17.9
Sikhism	20	12	32	0.1	22	10	45.5
Churches of Christ	13	16	29	0.1	36	-7	-19.4
Brethren	11	17	28	0.1	27	1	3.7
Baha'i	14	11	25	0.1	16	9	56.3
Other Christian	13	8	21	0.1	21	0	0.0
Chinese Religions	7	7	14	0.0	13	1	7.7
Nature Religions	0	12	12	0.0	..		
Other religions	34	30	64	0.2	52	12	23.1
Inadequately described	58	29	87	0.3	23	64	278.3
Not stated	1,221	1,170	2,391	8.2	2,043	348	17.0
<b>Total persons</b>	<b>14,323</b>	<b>14,969</b>	<b>29,292</b>	<b>100.0</b>	<b>28,355</b>	<b>937</b>	<b>3.3</b>