

Campbelltown LGA (NSW)

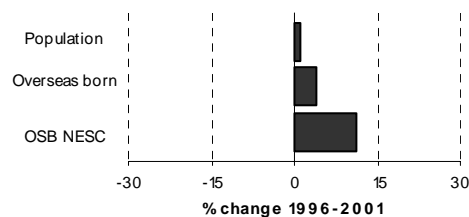
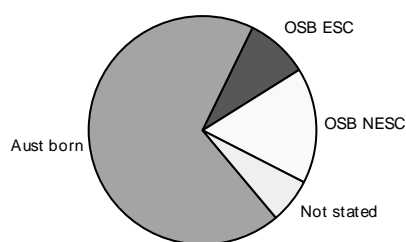


Table 3.11.1

Summary Indicators	2001 Census	% of population	1996 Census	Change 1996-2001	% change
Population	145,840	100.0	144,030	1,810	1.3
Australian born	99,836	68.5	103,745	-3,909	-3.8
Overseas born	36,671	25.1	35,250	1,421	4.0
Birthplace not stated	9,333	6.4	5,038	4,295	85.3
Overseas born - English speaking countries	12,612	8.6	13,596	-984	-7.2
Overseas born - non-English speaking countries	24,059	16.5	21,654	2,405	11.1
Aboriginal and/or Torres Strait Islanders	3,592	2.5	3,254	338	10.4
Language other than English spoken at home	28,258	19.4	24,695	3,563	14.4
Overseas born arrived since 1996	4,873	3.3			
Overseas born arrived since 1996 from NESC	3,543	2.4			

Table 3.11.2

Overseas Born: Birthplace by Gender, 2001 and 1996 Census

Birthplace	Males	Females	Persons	% of OSB	1996 Census	Change 1996-2001	% change
England	3,023	3,056	6,079	16.6	7,298	-1,219	-16.7
New Zealand	1,523	1,539	3,062	8.3	2,389	673	28.2
Philippines	1,074	1,523	2,597	7.1	2,074	523	25.2
Fiji	794	840	1,634	4.5	1,059	575	54.3
India	689	603	1,292	3.5	942	350	37.2
Scotland	619	643	1,262	3.4	1,567	-305	-19.5
Samoa	502	560	1,062	2.9	794	268	33.8
South Africa	475	487	962	2.6	954	8	0.8
Lebanon	475	447	922	2.5	950	-28	-2.9
Chile	426	465	891	2.4	915	-24	-2.6
China (excl. SARs and Taiwan)	356	395	751	2.0	518	233	45.0
Laos	346	369	715	1.9	825	-110	-13.3
Germany	331	374	705	1.9	782	-77	-9.8
Poland	309	353	662	1.8	714	-52	-7.3
Italy	339	258	597	1.6	667	-70	-10.5
Viet Nam	279	312	591	1.6	601	-10	-1.7
Egypt	306	271	577	1.6	498	79	15.9
Mauritius	278	276	554	1.5	577	-23	-4.0
Croatia	255	225	480	1.3	481	-1	-0.2
Bangladesh	243	204	447	1.2	27	420	1,555.6
Ireland	237	206	443	1.2	515	-72	-14.0
Sri Lanka	198	215	413	1.1	435	-22	-5.1
Yugoslavia, Federal Republic of	208	193	401	1.1	n.c.	n.c.	n.c.
Netherlands	218	158	376	1.0	423	-47	-11.1
Malta	194	174	368	1.0	410	-42	-10.2
Greece	186	167	353	1.0	334	19	5.7
Malaysia	144	185	329	0.9	360	-31	-8.6
Cambodia	148	177	325	0.9	360	-35	-9.7
Thailand	139	184	323	0.9	300	23	7.7
Tonga	145	150	295	0.8	222	73	32.9
Other birthplaces	3,577	3,626	7,203	19.6	n.c.	n.c.	n.c.
Total overseas born	18,036	18,635	36,671	100.0	35,250	1,421	4.0

Campbelltown LGA (NSW)

(continued)

Table 3.11.3

Birthplace by Age: Selected Birthplace Groups, 2001 Census

Percentage in age group of each birthplace - total expressed as a number

Birthplace	Age 0-12	Age 13-24	Age 25-54	Age 55-64	Age 65+	Total
England	1.1	5.3	58.1	19.3	16.2	6,079
New Zealand	21.1	25.0	46.6	5.1	2.2	3,062
Philippines	7.7	21.4	61.4	4.7	4.8	2,597
Fiji	4.9	20.3	66.1	5.6	3.1	1,634
India	8.0	14.8	62.7	6.7	7.7	1,292
Scotland	1.2	6.2	58.5	19.2	15.0	1,262
Samoa	4.0	11.7	72.3	7.7	4.3	1,062
South Africa	5.2	20.0	54.0	12.0	8.9	962
Lebanon	1.4	12.3	71.4	10.1	4.9	922
Chile	1.3	12.8	62.4	17.3	6.2	891

Table 3.11.4

Languages other than English Spoken at Home by Gender, 2001 and 1996 Census

Language	Males	Females	Persons	% of LOTE speakers	1996	Change	% change
					Census	1996-2001	
Arabic	1,726	1,606	3,332	11.8	2,838	494	17.4
Spanish	1,259	1,330	2,589	9.2	2,667	-78	-2.9
Tagalog (Filipino)	954	1,279	2,233	7.9	1,687	546	32.4
Samoan	1,006	1,063	2,069	7.3	1,435	634	44.2
Hindi	913	874	1,787	6.3	1,075	712	66.2
Cantonese	489	546	1,035	3.7	1,027	8	0.8
Lao	478	486	964	3.4	1,031	-67	-6.5
Italian	485	466	951	3.4	1,000	-49	-4.9
Greek	459	423	882	3.1	783	99	12.6
Vietnamese	402	433	835	3.0	701	134	19.1
Croatian	398	388	786	2.8	811	-25	-3.1
Polish	358	403	761	2.7	758	3	0.4
French	284	317	601	2.1	635	-34	-5.4
Bengali	297	249	546	1.9	49	497	1,014.3
Mandarin	259	275	534	1.9	261	273	104.6
Tongan	246	222	468	1.7	330	138	41.8
Khmer	212	236	448	1.6	516	-68	-13.2
German	191	233	424	1.5	626	-202	-32.3
Macedonian	169	182	351	1.2	275	76	27.6
Serbian	173	166	339	1.2	312	27	8.7
Russian	147	189	336	1.2	237	99	41.8
Persian	145	141	286	1.0	279	7	2.5
Maltese	127	127	254	0.9	269	-15	-5.6
Indonesian	127	116	243	0.9	196	47	24.0
Urdu	133	102	235	0.8	101	134	132.7
Hungarian	108	117	225	0.8	242	-17	-7.0
Portuguese	105	117	222	0.8	209	13	6.2
Punjabi	127	94	221	0.8	182	39	21.4
Tamil	101	114	215	0.8	221	-6	-2.7
Thai	89	122	211	0.7	151	60	39.7
Other languages	1,925	1,950	3,875	13.7	3,791	84	2.2
Total LOTE speakers	13,892	14,366	28,258	100.0	24,695	3,563	14.4

Campbelltown LGA (NSW)

(continued)

Table 3.11.5

English Language Competency by Age: Selected Language Groups, 2001 Census

Language	Age 0-12	Age 13-24	Age 25-54	Age 55-64	Age 65+	Total
Arabic						
Speak English well/very well	685	794	1,121	113	45	2,758
Speak English not well/not at all	130	19	224	60	57	490
Total including not stated	862	822	1,363	179	106	3,332
<i>Percent not well/not at all</i>	<i>15.1</i>	<i>2.3</i>	<i>16.4</i>	<i>33.5</i>	<i>53.8</i>	<i>14.7</i>
Spanish						
Speak English well/very well	308	497	1,070	232	66	2,173
Speak English not well/not at all	30	..	143	89	88	358
Total including not stated	353	519	1,235	326	157	2,590
<i>Percent not well/not at all</i>	<i>8.5</i>		<i>11.6</i>	<i>27.3</i>	<i>56.1</i>	<i>13.8</i>
Tagalog (Filipino)						
Speak English well/very well	237	380	1,322	105	81	2,125
Speak English not well/not at all	14	..	16	..	32	69
Total including not stated	263	393	1,354	108	113	2,231
<i>Percent not well/not at all</i>	<i>5.3</i>		<i>1.2</i>		<i>28.3</i>	<i>3.1</i>
Samoan						
Speak English well/very well	530	400	786	53	14	1,783
Speak English not well/not at all	88	11	80	21	35	235
Total including not stated	639	425	879	74	52	2,069
<i>Percent not well/not at all</i>	<i>13.8</i>	<i>2.6</i>	<i>9.1</i>	<i>28.4</i>	<i>67.3</i>	<i>11.4</i>
Hindi						
Speak English well/very well	310	348	897	52	29	1,636
Speak English not well/not at all	68	..	18	23	21	133
Total including not stated	384	354	926	75	50	1,789
<i>Percent not well/not at all</i>	<i>17.7</i>		<i>1.9</i>	<i>30.7</i>	<i>42.0</i>	<i>7.4</i>
Cantonese						
Speak English well/very well	133	198	321	36	18	706
Speak English not well/not at all	43	..	175	41	48	314
Total including not stated	181	208	503	77	66	1,035
<i>Percent not well/not at all</i>	<i>23.8</i>		<i>34.8</i>	<i>53.2</i>	<i>72.7</i>	<i>30.3</i>
All speakers of languages other than English						
Speak English well/very well	4,085	5,115	11,849	1,576	1,016	23,641
Speak English not well/not at all	808	144	1,699	610	709	3,970
Total including not stated	5,159	5,349	13,747	2,219	1,762	28,236
<i>Percent not well/not at all</i>	<i>15.7</i>	<i>2.7</i>	<i>12.4</i>	<i>27.5</i>	<i>40.2</i>	<i>14.1</i>

Table 3.11.6

Ancestry by Birthplace of Parents: Selected Ancestry Groups, 2001 Census

Ancestry	Australian Born					Overseas born	Not stated birthplace	Total responses
	Both parents born in Australia		Both parents born overseas		Parent(s) birthplace not stated			
	Mother born/Father born/OSB	Father born/Mother born/OSB	Mother Aust born/Father Aust born/OSB	Father Aust born/Mother Aust born/OSB				
Australian	39,917	4,608	3,194	962	1,402	541	1,652	52,276
English	24,445	4,194	2,818	2,774	990	7,566	1,301	44,088
Irish	7,839	1,045	598	569	222	1,483	327	12,083
German	1,663	376	252	505	52	988	91	3,927
Italian	1,050	516	190	857	68	873	106	3,660
Scottish	1,261	418	235	433	44	1,137	85	3,613
Indian	11	43	35	616	34	2,511	95	3,345
Filipino	19	25	123	488	50	2,396	128	3,229
Chinese	139	60	73	480	38	1,815	71	2,676
Samoan	..	57	12	407	42	1,512	87	2,120

Campbelltown LGA (NSW)

(continued)

Table 3.11.7

Religious Affiliation by Gender, 2001 and 1996 Census

Religion	Males	Females	Persons	% of population	1996 Census	Change 1996-2001	% change
Catholic	22,718	24,078	46,796	32.1	47,319	-523	-1.1
Anglican	18,162	19,673	37,835	25.9	40,401	-2,566	-6.4
No Religion	7,241	5,987	13,228	9.1	15,304	-2,076	-13.6
Islam	2,500	2,266	4,766	3.3	3,108	1,658	53.3
Uniting Church	2,158	2,434	4,592	3.1	5,287	-695	-13.1
Presbyterian & Reformed	2,062	2,179	4,241	2.9	4,767	-526	-11.0
Orthodox	1,387	1,402	2,789	1.9	2,431	358	14.7
Buddhism	1,324	1,447	2,771	1.9	2,081	690	33.2
Baptist	1,297	1,416	2,713	1.9	2,646	67	2.5
Hinduism	1,178	1,126	2,304	1.6	1,445	859	59.4
Pentecostal	786	867	1,653	1.1	1,451	202	13.9
Christian, nfd	745	802	1,547	1.1	1,019	528	51.8
Religious belief, nfd	672	601	1,273	0.9	291	982	337.5
Latter Day Saints	608	634	1,242	0.9	954	288	30.2
Jehovah's Witnesses	366	459	825	0.6	832	-7	-0.8
Lutheran	389	386	775	0.5	827	-52	-6.3
Other Protestant	294	306	600	0.4	511	89	17.4
Oriental Christian	298	301	599	0.4	449	150	33.4
Seventh-day Adventist	245	307	552	0.4	540	12	2.2
Salvation Army	228	306	534	0.4	533	1	0.2
Churches of Christ	151	178	329	0.2	367	-38	-10.4
Brethren	151	128	279	0.2	304	-25	-8.2
Other Christian	117	147	264	0.2	265	-1	-0.4
Sikhism	148	107	255	0.2	162	93	57.4
Nature Religions	52	98	150	0.1	30	120	400.0
Baha'i	44	39	83	0.1	67	16	23.9
Judaism	33	32	65	0.0	59	6	10.2
Spiritualism	12	25	37	0.0	57	-20	-35.1
Druse	15	14	29	0.0	13	16	123.1
Other religions	67	47	114	0.1	109	5	4.6
Inadequately described	426	284	710	0.5	130	580	446.2
Not stated	5,997	5,893	11,890	8.2	10,271	1,619	15.8
Total persons	71,871	73,969	145,840	100.0	144,030	1,810	1.3