

Lane Cove LGA

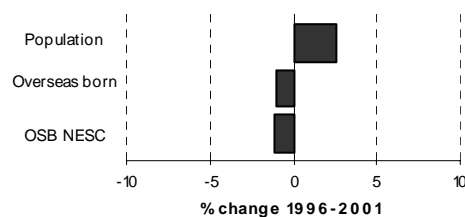
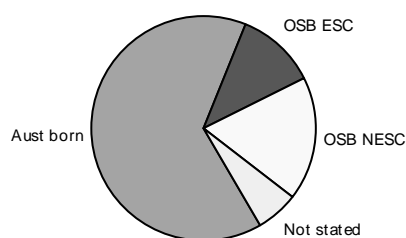


Table 3.23.1

Summary Indicators	2001	% of	1996	Change	% change
	Census	population	Census	1996-2001	
Population	30,389	100.0	29,643	746	2.5
Australian born	19,623	64.6	19,800	-177	-0.9
Overseas born	8,876	29.2	8,962	-86	-1.0
Birthplace not stated	1,890	6.2	883	1,007	114.0
Overseas born - English speaking countries	3,409	11.2	3,431	-22	-0.6
Overseas born - non-English speaking countries	5,467	18.0	5,531	-64	-1.2
Aboriginal and/or Torres Strait Islanders	73	0.2	48	25	52.1
Language other than English spoken at home	5,378	17.7	5,353	25	0.5
Overseas born arrived since 1996	1,828	6.0			
Overseas born arrived since 1996 from NESC	1,114	3.7			

Table 3.23.2

Overseas Born: Birthplace by Gender, 2001 and 1996 Census

Birthplace	Males	Females	Persons	% of OSB	1996	Change	% change
					Census	1996-2001	
England	828	717	1,545	17.4	1,653	-108	-6.5
New Zealand	407	423	830	9.4	756	74	9.8
China (excl. SARs and Taiwan)	240	324	564	6.4	649	-85	-13.1
Hong Kong (SAR of China)	208	250	458	5.2	445	13	2.9
South Africa	172	147	319	3.6	237	82	34.6
India	187	129	316	3.6	243	73	30.0
Malaysia	130	158	288	3.2	268	20	7.5
Japan	87	155	242	2.7	174	68	39.1
United States of America	118	114	232	2.6	226	6	2.7
Philippines	92	131	223	2.5	259	-36	-13.9
Scotland	104	97	201	2.3	231	-30	-13.0
Italy	106	90	196	2.2	221	-25	-11.3
Iran	87	81	168	1.9	208	-40	-19.2
Germany	75	85	160	1.8	184	-24	-13.0
Poland	72	83	155	1.7	164	-9	-5.5
Korea, Republic of (South)	55	80	135	1.5	138	-3	-2.2
Indonesia	54	63	117	1.3	106	11	10.4
Croatia	57	52	109	1.2	105	4	3.8
Ireland	53	56	109	1.2	149	-40	-26.8
Hungary	49	56	105	1.2	121	-16	-13.2
Yugoslavia, Federal Republic of	55	47	102	1.1	n.c.	n.c.	n.c.
Greece	52	49	101	1.1	114	-13	-11.4
Canada	55	45	100	1.1	86	14	16.3
Egypt	44	55	99	1.1	117	-18	-15.4
Netherlands	52	42	94	1.1	102	-8	-7.8
Singapore	41	52	93	1.0	96	-3	-3.1
Thailand	28	58	86	1.0	47	39	83.0
Sri Lanka	39	40	79	0.9	79	0	0.0
Fiji	34	39	73	0.8	65	8	12.3
Lebanon	33	40	73	0.8	101	-28	-27.7
Other birthplaces	727	777	1,504	16.9	n.c.	n.c.	n.c.
Total overseas born	4,341	4,535	8,876	100.0	8,962	-86	-1.0

Lane Cove LGA

(continued)

Table 3.23.3

Birthplace by Age: Selected Birthplace Groups, 2001 Census

Percentage in age group of each birthplace - total expressed as a number

Birthplace	Age 0-12	Age 13-24	Age 25-54	Age 55-64	Age 65+	Total
England	4.5	5.4	57.5	15.1	17.5	1,545
New Zealand	8.7	10.7	64.0	9.0	7.6	830
China (excl. SARs and Taiwan)	3.2	9.8	58.7	10.3	18.1	564
Hong Kong (SAR of China)	3.3	25.1	60.5	8.1	3.1	458
South Africa	7.8	10.7	65.5	7.8	8.2	319
India	5.4	16.1	63.0	8.5	7.0	316
Malaysia	3.5	11.5	70.1	8.3	6.6	288
Japan	10.7	7.4	74.4	5.0	2.5	242
United States of America	11.2	16.8	56.0	8.6	7.3	232
Philippines	5.8	15.2	69.1	3.6	6.3	223

Table 3.23.4

Languages other than English Spoken at Home by Gender, 2001 and 1996 Census

Language	Males	Females	Persons	% of LOTE speakers	1996	Change	% change
					Census	1996-2001	
Cantonese	451	499	950	17.7	934	16	1.7
Mandarin	206	277	483	9.0	432	51	11.8
Italian	173	191	364	6.8	324	40	12.3
Japanese	119	156	275	5.1	195	80	41.0
Greek	136	136	272	5.1	308	-36	-11.7
Armenian	112	119	231	4.3	298	-67	-22.5
Spanish	82	101	183	3.4	157	26	16.6
Croatian	85	78	163	3.0	142	21	14.8
Persian	79	75	154	2.9	172	-18	-10.5
Polish	72	79	151	2.8	155	-4	-2.6
Tagalog (Filipino)	69	81	150	2.8	194	-44	-22.7
Arabic	80	69	149	2.8	150	-1	-0.7
German	64	74	138	2.6	200	-62	-31.0
Korean	65	71	136	2.5	135	1	0.7
French	59	64	123	2.3	150	-27	-18.0
Serbian	52	55	107	2.0	70	37	52.9
Hindi	62	42	104	1.9	76	28	36.8
Hungarian	39	48	87	1.6	107	-20	-18.7
Thai	34	41	75	1.4	37	38	102.7
Russian	33	40	73	1.4	44	29	65.9
Indonesian	35	35	70	1.3	65	5	7.7
Bengali	35	26	61	1.1	86	-25	-29.1
Chinese, nfd	26	29	55	1.0	115	-60	-52.2
Netherlandic	24	20	44	0.8	54	-10	-18.5
Tamil	22	18	40	0.7	32	8	25.0
Hokkien	12	26	38	0.7	29	9	31.0
Turkish	19	15	34	0.6	35	-1	-2.9
Punjabi	21	12	33	0.6	33	0	0.0
Macedonian	16	15	31	0.6	33	-2	-6.1
Portuguese	9	20	29	0.5	16	13	81.3
Other languages	280	295	575	10.7	575	0	0.0
Total LOTE speakers	2,571	2,807	5,378	100.0	5,353	25	0.5

Lane Cove LGA

(continued)

Table 3.23.5

English Language Competency by Age: Selected Language Groups, 2001 Census

Language	Age 0-12	Age 13-24	Age 25-54	Age 55-64	Age 65+	Total
Cantonese						
Speak English well/very well	76	180	448	66	32	802
Speak English not well/not at all	16	..	47	15	60	142
Total including not stated	92	184	499	81	92	948
<i>Percent not well/not at all</i>	17.4		9.4	18.5	65.2	15.0
Mandarin						
Speak English well/very well	49	64	226	15	11	365
Speak English not well/not at all	19	..	48	..	28	110
Total including not stated	71	76	277	21	39	484
<i>Percent not well/not at all</i>	26.8		17.3		71.8	22.7
Italian						
Speak English well/very well	20	41	157	47	62	327
Speak English not well/not at all	19	31
Total including not stated	25	44	161	50	81	361
<i>Percent not well/not at all</i>					23.5	8.6
Japanese						
Speak English well/very well	44	12	138	10	..	207
Speak English not well/not at all	24	..	34	68
Total including not stated	68	16	175	13	..	278
<i>Percent not well/not at all</i>	35.3		19.4			24.5
Greek						
Speak English well/very well	29	26	126	32	31	244
Speak English not well/not at all	16	22
Total including not stated	35	26	129	35	47	272
<i>Percent not well/not at all</i>					34.0	8.1
Armenian						
Speak English well/very well	13	38	83	22	25	181
Speak English not well/not at all	11	..	27	47
Total including not stated	16	38	94	28	55	231
<i>Percent not well/not at all</i>			11.7		49.1	20.3
All speakers of languages other than English						
Speak English well/very well	524	730	2,585	375	395	4,609
Speak English not well/not at all	127	33	245	72	225	702
Total including not stated	703	772	2,853	456	629	5,413
<i>Percent not well/not at all</i>	18.1	4.3	8.6	15.8	35.8	13.0

Table 3.23.6

Ancestry by Birthplace of Parents: Selected Ancestry Groups, 2001 Census

Ancestry	Australian Born					Overseas born	Not stated birthplace	Total responses
	Both parents born in Australia		Both parents born overseas		Parent(s) birthplace not stated			
	Mother Aust born/Father OSB	Father Aust born/Mother OSB	Mother Aust born/Father OSB	Father Aust born/Mother OSB				
English	5,299	1,111	661	688	115	2,350	156	10,380
Australian	6,902	1,029	741	143	166	328	172	9,481
Irish	2,885	377	213	160	44	582	61	4,322
Chinese	56	60	71	348	..	1,545	55	2,144
Scottish	476	116	63	96	..	301	14	1,072
Italian	249	123	60	249	18	283	26	1,008
German	391	95	57	127	..	259	..	941
Greek	88	45	28	159	..	164	19	506
Indian	59	..	349	..	432
New Zealander	17	21	31	72	..	241	..	388

Lane Cove LGA

(continued)

Table 3.23.7

Religious Affiliation by Gender, 2001 and 1996 Census

Religion	Males	Females	Persons	% of population	1996 Census	Change 1996-2001	% change
Catholic	4,326	4,587	8,913	29.3	8,495	418	4.9
Anglican	2,833	3,482	6,315	20.8	6,729	-414	-6.2
No Religion	2,770	2,452	5,222	17.2	5,462	-240	-4.4
Uniting Church	606	796	1,402	4.6	1,657	-255	-15.4
Presbyterian & Reformed	455	534	989	3.3	1,049	-60	-5.7
Orthodox	352	351	703	2.3	669	34	5.1
Buddhism	294	338	632	2.1	293	339	115.7
Judaism	213	216	429	1.4	514	-85	-16.5
Islam	173	176	349	1.1	365	-16	-4.4
Religious belief, nfd	152	168	320	1.1	77	243	315.6
Christian, nfd	136	178	314	1.0	245	69	28.2
Hinduism	151	121	272	0.9	194	78	40.2
Baptist	120	122	242	0.8	289	-47	-16.3
Oriental Christian	101	106	207	0.7	260	-53	-20.4
Lutheran	94	109	203	0.7	228	-25	-11.0
Pentecostal	73	97	170	0.6	165	5	3.0
Baha'i	23	26	49	0.2	33	16	48.5
Sikhism	26	23	49	0.2	35	14	40.0
Churches of Christ	20	28	48	0.2	57	-9	-15.8
Other Christian	21	22	43	0.1	39	4	10.3
Other Protestant	13	30	43	0.1	61	-18	-29.5
Jehovah's Witnesses	17	24	41	0.1	46	-5	-10.9
Salvation Army	19	22	41	0.1	36	5	13.9
Latter Day Saints	21	16	37	0.1	38	-1	-2.6
Nature Religions	14	21	35	0.1	14	21	150.0
Seventh-day Adventist	15	14	29	0.1	33	-4	-12.1
Spiritualism	4	7	11	0.0	..		
Other religions	31	33	64	0.2	71	-7	-9.9
Inadequately described	188	83	271	0.9	28	243	867.9
Not stated	1,462	1,484	2,946	9.7	2,461	485	19.7
Total persons	14,723	15,666	30,389	100.0	29,643	746	2.5