

Lachlan LGA

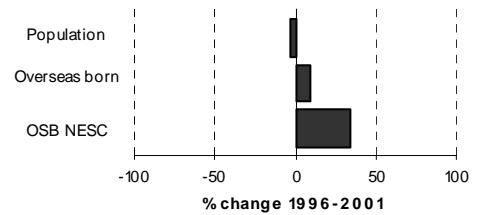
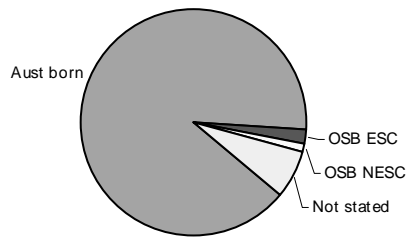


Table 4.63.1

Summary Indicators	2001	% of	1996	Change	
	Census	population	Census	1996-2001	% change
Population	7,250	100.0	7,442	-192	-2.6
Australian born	6,535	90.1	6,982	-447	-6.4
Overseas born	228	3.1	208	20	9.6
Birthplace not stated	487	6.7	258	229	88.8
Overseas born - English speaking countries	133	1.8	137	-4	-2.9
Overseas born - non-English speaking countries	95	1.3	71	24	33.8
Aboriginal and/or Torres Strait Islanders	874	12.1	848	26	3.1
Language other than English spoken at home	86	1.2	74	12	16.2
Overseas born arrived since 1996	30	0.4			
Overseas born arrived since 1996 from NESC	11	0.2			

Table 4.63.2

Overseas Born: Birthplace by Gender, 2001 and 1996 Census

Birthplace	Males	Females	Persons	% of OSB	1996	Change	
					Census	1996-2001	% change
England	18	34	52	22.8	69	-17	-24.6
New Zealand	27	20	47	20.6	33	14	42.4
Scotland	8	4	12	5.3	16	-4	-25.0
Other birthplaces	54	63	117	51.3	90	27	30.0
Total overseas born	107	121	228	100.0	208	20	9.6

Lachlan LGA

(continued)

Table 4.63.3

Religious Affiliation by Gender, 2001 and 1996 Census

Religion	Males	Females	Persons	% of population	1996 Census	Change 1996-2001	% change
Anglican	1,108	1,116	2,224	30.7	2,390	-166	-6.9
Catholic	1,049	1,081	2,130	29.4	2,144	-14	-0.7
Uniting Church	351	338	689	9.5	657	32	4.9
Presbyterian & Reformed	304	273	577	8.0	712	-135	-19.0
No Religion	276	162	438	6.0	466	-28	-6.0
Christian, nfd	65	61	126	1.7	93	33	35.5
Brethren	59	62	121	1.7	101	20	19.8
Pentecostal	31	30	61	0.8	72	-11	-15.3
Other Protestant	16	23	39	0.5	47	-8	-17.0
Baptist	20	18	38	0.5	50	-12	-24.0
Lutheran	17	13	30	0.4	27	3	11.1
Other religions	94	91	185	2.6	103	82	79.6
Inadequately described	7	7	14	0.2	..		
Not stated	290	288	578	8.0	572	6	1.0
Total persons	3,687	3,563	7,250	100.0	7,442	-192	-2.6

Table 4.63.4

Ancestry by Birthplace of Parents: Selected Ancestry Groups, 2001 Census

Ancestry	Australian Born					Overseas born	Not stated birthplace	Total responses
	Both parents born in Australia		Both parents born overseas		Parent(s) birthplace not stated			
	Mother born/Father born/OSB	Father born/Mother born/OSB	Mother Aust born/Father Aust born/OSB	Father Aust born/Mother Aust born/OSB				
Australian	3,540	70	81	..	126	..	129	3,962
English	1,990	85	69	34	63	78	114	2,433
Irish	505	25	13	..	15	16	16	596
German	138	173
Scottish	88	16	14	..	135
Australian Aboriginal	85	88
Italian	28	42
Dutch	31
Greek	13	30
Chinese	12	..	25