

Leichhardt LGA

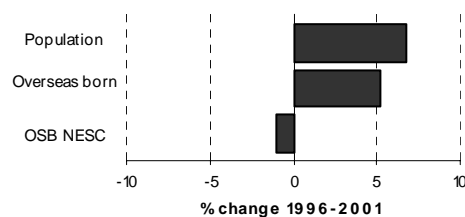
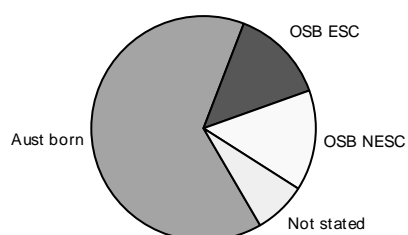


Table 3.24.1

| Summary Indicators | 2001 | % of | 1996 | Change | % change |
|--|--------|------------|--------|-----------|----------|
| | Census | population | Census | 1996-2001 | |
| Population | 61,328 | 100.0 | 57,473 | 3,855 | 6.7 |
| Australian born | 39,309 | 64.1 | 38,049 | 1,260 | 3.3 |
| Overseas born | 17,402 | 28.4 | 16,532 | 870 | 5.3 |
| Birthplace not stated | 4,617 | 7.5 | 2,901 | 1,716 | 59.2 |
| Overseas born - English speaking countries | 8,471 | 13.8 | 7,512 | 959 | 12.8 |
| Overseas born - non-English speaking countries | 8,931 | 14.6 | 9,020 | -89 | -1.0 |
| Aboriginal and/or Torres Strait Islanders | 604 | 1.0 | 652 | -48 | -7.4 |
| Language other than English spoken at home | 9,476 | 15.5 | 9,745 | -269 | -2.8 |
| Overseas born arrived since 1996 | 3,832 | 6.2 | | | |
| Overseas born arrived since 1996 from NESC | 1,527 | 2.5 | | | |

Table 3.24.2

Overseas Born: Birthplace by Gender, 2001 and 1996 Census

| Birthplace | Males | Females | Persons | % of OSB | 1996 | Change | % change |
|---------------------------------|--------------|--------------|---------------|--------------|---------------|------------|------------|
| | | | | | Census | 1996-2001 | |
| England | 2,119 | 1,837 | 3,956 | 22.7 | 3,674 | 282 | 7.7 |
| New Zealand | 1,106 | 1,149 | 2,255 | 13.0 | 1,881 | 374 | 19.9 |
| Italy | 668 | 652 | 1,320 | 7.6 | 1,532 | -212 | -13.8 |
| United States of America | 261 | 264 | 525 | 3.0 | 436 | 89 | 20.4 |
| Ireland | 263 | 240 | 503 | 2.9 | 372 | 131 | 35.2 |
| Scotland | 254 | 245 | 499 | 2.9 | 502 | -3 | -0.6 |
| Greece | 241 | 239 | 480 | 2.8 | 587 | -107 | -18.2 |
| China (excl. SARs and Taiwan) | 170 | 276 | 446 | 2.6 | 362 | 84 | 23.2 |
| Viet Nam | 177 | 256 | 433 | 2.5 | 393 | 40 | 10.2 |
| Germany | 190 | 207 | 397 | 2.3 | 348 | 49 | 14.1 |
| South Africa | 116 | 165 | 281 | 1.6 | 233 | 48 | 20.6 |
| Malaysia | 118 | 146 | 264 | 1.5 | 212 | 52 | 24.5 |
| Philippines | 100 | 155 | 255 | 1.5 | 316 | -61 | -19.3 |
| Canada | 120 | 115 | 235 | 1.4 | 221 | 14 | 6.3 |
| India | 124 | 98 | 222 | 1.3 | 172 | 50 | 29.1 |
| Netherlands | 116 | 102 | 218 | 1.3 | 177 | 41 | 23.2 |
| Thailand | 89 | 129 | 218 | 1.3 | 157 | 61 | 38.9 |
| Hong Kong (SAR of China) | 102 | 107 | 209 | 1.2 | 193 | 16 | 8.3 |
| Yugoslavia, Federal Republic of | 102 | 102 | 204 | 1.2 | n.c. | n.c. | n.c. |
| Japan | 47 | 152 | 199 | 1.1 | 202 | -3 | -1.5 |
| Indonesia | 89 | 109 | 198 | 1.1 | 198 | 0 | 0.0 |
| Malta | 76 | 106 | 182 | 1.0 | 250 | -68 | -27.2 |
| France | 81 | 82 | 163 | 0.9 | 133 | 30 | 22.6 |
| Fiji | 77 | 75 | 152 | 0.9 | 200 | -48 | -24.0 |
| Portugal | 77 | 68 | 145 | 0.8 | 180 | -35 | -19.4 |
| Poland | 66 | 76 | 142 | 0.8 | 134 | 8 | 6.0 |
| Spain | 75 | 58 | 133 | 0.8 | 156 | -23 | -14.7 |
| Singapore | 51 | 77 | 128 | 0.7 | 101 | 27 | 26.7 |
| Korea, Republic of (South) | 49 | 75 | 124 | 0.7 | 117 | 7 | 6.0 |
| Lebanon | 66 | 56 | 122 | 0.7 | 173 | -51 | -29.5 |
| Other birthplaces | 1,401 | 1,393 | 2,794 | 16.1 | n.c. | n.c. | n.c. |
| Total overseas born | 8,591 | 8,811 | 17,402 | 100.0 | 16,532 | 870 | 5.3 |

Leichhardt LGA

(continued)

Table 3.24.3

Birthplace by Age: Selected Birthplace Groups, 2001 Census

Percentage in age group of each birthplace - total expressed as a number

| Birthplace | Age 0-12 | Age 13-24 | Age 25-54 | Age 55-64 | Age 65+ | Total |
|-------------------------------|----------|-----------|-----------|-----------|---------|-------|
| England | 2.3 | 4.6 | 74.6 | 11.0 | 7.5 | 3,956 |
| New Zealand | 2.5 | 9.4 | 79.0 | 6.4 | 2.7 | 2,255 |
| Italy | 0.8 | 1.9 | 31.0 | 19.2 | 47.0 | 1,320 |
| United States of America | 5.5 | 10.3 | 69.9 | 9.0 | 5.3 | 525 |
| Ireland | 0.6 | 8.3 | 76.9 | 6.4 | 7.8 | 503 |
| Scotland | 1.0 | 3.6 | 68.7 | 11.4 | 15.2 | 499 |
| Greece | 0.8 | 2.7 | 26.5 | 32.1 | 37.9 | 480 |
| China (excl. SARs and Taiwan) | 2.9 | 13.2 | 60.1 | 6.1 | 17.7 | 446 |
| Viet Nam | 1.6 | 21.2 | 61.0 | 8.1 | 8.1 | 433 |
| Germany | 1.5 | 4.5 | 66.8 | 17.9 | 9.3 | 397 |

Table 3.24.4

Languages other than English Spoken at Home by Gender, 2001 and 1996 Census

| Language | Males | Females | Persons | % of LOTE speakers | 1996 | Change | % change |
|----------------------------|--------------|--------------|--------------|--------------------|--------------|-------------|-------------|
| | | | | | Census | 1996-2001 | |
| Italian | 1,036 | 1,035 | 2,071 | 21.9 | 2,284 | -213 | -9.3 |
| Greek | 489 | 481 | 970 | 10.2 | 1,060 | -90 | -8.5 |
| Cantonese | 248 | 350 | 598 | 6.3 | 543 | 55 | 10.1 |
| Spanish | 268 | 310 | 578 | 6.1 | 657 | -79 | -12.0 |
| Vietnamese | 193 | 260 | 453 | 4.8 | 375 | 78 | 20.8 |
| Mandarin | 156 | 247 | 403 | 4.3 | 233 | 170 | 73.0 |
| French | 164 | 190 | 354 | 3.7 | 271 | 83 | 30.6 |
| German | 159 | 174 | 333 | 3.5 | 385 | -52 | -13.5 |
| Arabic | 180 | 149 | 329 | 3.5 | 389 | -60 | -15.4 |
| Japanese | 75 | 139 | 214 | 2.3 | 194 | 20 | 10.3 |
| Portuguese | 108 | 104 | 212 | 2.2 | 252 | -40 | -15.9 |
| Thai | 76 | 106 | 182 | 1.9 | 147 | 35 | 23.8 |
| Indonesian | 75 | 91 | 166 | 1.8 | 207 | -41 | -19.8 |
| Tagalog (Filipino) | 67 | 95 | 162 | 1.7 | 224 | -62 | -27.7 |
| Serbian | 78 | 79 | 157 | 1.7 | 140 | 17 | 12.1 |
| Maltese | 62 | 82 | 144 | 1.5 | 192 | -48 | -25.0 |
| Netherlandic | 59 | 72 | 131 | 1.4 | 88 | 43 | 48.9 |
| Polish | 60 | 63 | 123 | 1.3 | 111 | 12 | 10.8 |
| Croatian | 49 | 72 | 121 | 1.3 | 132 | -11 | -8.3 |
| Hindi | 65 | 43 | 108 | 1.1 | 80 | 28 | 35.0 |
| Tongan | 50 | 57 | 107 | 1.1 | 124 | -17 | -13.7 |
| Turkish | 49 | 56 | 105 | 1.1 | 101 | 4 | 4.0 |
| Korean | 34 | 64 | 98 | 1.0 | 94 | 4 | 4.3 |
| Macedonian | 44 | 41 | 85 | 0.9 | 89 | -4 | -4.5 |
| Russian | 29 | 54 | 83 | 0.9 | 87 | -4 | -4.6 |
| Hungarian | 40 | 39 | 79 | 0.8 | 95 | -16 | -16.8 |
| South Slavic, nfd | 22 | 28 | 50 | 0.5 | 71 | -21 | -29.6 |
| Fijian | 21 | 25 | 46 | 0.5 | 91 | -45 | -49.5 |
| Chinese, nfd | 22 | 21 | 43 | 0.5 | 82 | -39 | -47.6 |
| Swedish | 13 | 24 | 37 | 0.4 | 25 | 12 | 48.0 |
| Other languages | 478 | 456 | 934 | 9.9 | 922 | 12 | 1.3 |
| Total LOTE speakers | 4,469 | 5,007 | 9,476 | 100.0 | 9,745 | -269 | -2.8 |

Leichhardt LGA

(continued)

Table 3.24.5

English Language Competency by Age: Selected Language Groups, 2001 Census

| Language | Age 0-12 | Age 13-24 | Age 25-54 | Age 55-64 | Age 65+ | Total |
|---|-------------|--------------|--------------|-------------|--------------|--------------|
| Italian | | | | | | |
| Speak English well/very well | 102 | 179 | 781 | 177 | 285 | 1,524 |
| Speak English not well/not at all | 20 | 12 | 41 | 88 | 350 | 511 |
| Total including not stated | 126 | 195 | 840 | 265 | 644 | 2,070 |
| <i>Percent not well/not at all</i> | <i>15.9</i> | <i>6.2</i> | <i>4.9</i> | <i>33.2</i> | <i>54.3</i> | <i>24.7</i> |
| Greek | | | | | | |
| Speak English well/very well | 40 | 66 | 423 | 111 | 89 | 729 |
| Speak English not well/not at all | .. | .. | 15 | 67 | 134 | 222 |
| Total including not stated | 43 | 72 | 451 | 178 | 227 | 971 |
| <i>Percent not well/not at all</i> | | | <i>3.3</i> | <i>37.6</i> | <i>59.0</i> | <i>22.9</i> |
| Cantonese | | | | | | |
| Speak English well/very well | 38 | 133 | 220 | 27 | 15 | 433 |
| Speak English not well/not at all | .. | .. | 66 | 25 | 55 | 158 |
| Total including not stated | 47 | 142 | 289 | 52 | 70 | 600 |
| <i>Percent not well/not at all</i> | | | <i>22.8</i> | <i>48.1</i> | <i>78.6</i> | <i>26.3</i> |
| Spanish | | | | | | |
| Speak English well/very well | 34 | 86 | 265 | 59 | 32 | 476 |
| Speak English not well/not at all | .. | .. | 19 | 27 | 40 | 89 |
| Total including not stated | 42 | 89 | 289 | 89 | 72 | 581 |
| <i>Percent not well/not at all</i> | | | <i>6.6</i> | <i>30.3</i> | <i>55.6</i> | <i>15.3</i> |
| Vietnamese | | | | | | |
| Speak English well/very well | 60 | 125 | 95 | .. | .. | 292 |
| Speak English not well/not at all | 18 | .. | 94 | 18 | 24 | 158 |
| Total including not stated | 78 | 132 | 192 | 25 | 29 | 456 |
| <i>Percent not well/not at all</i> | <i>23.1</i> | | <i>49.0</i> | <i>72.0</i> | <i>82.8</i> | <i>34.6</i> |
| Mandarin | | | | | | |
| Speak English well/very well | 24 | 91 | 168 | 10 | .. | 301 |
| Speak English not well/not at all | 13 | 11 | 51 | .. | 16 | 95 |
| Total including not stated | 40 | 102 | 225 | 14 | 24 | 405 |
| <i>Percent not well/not at all</i> | <i>32.5</i> | <i>10.8</i> | <i>22.7</i> | | <i>66.7</i> | <i>23.5</i> |
| All speakers of languages other than English | | | | | | |
| Speak English well/very well | 615 | 1,340 | 4,192 | 665 | 707 | 7,519 |
| Speak English not well/not at all | 131 | 74 | 469 | 301 | 760 | 1,735 |
| Total including not stated | 831 | 1,439 | 4,737 | 975 | 1,489 | 9,471 |
| <i>Percent not well/not at all</i> | <i>15.8</i> | <i>5.1</i> | <i>9.9</i> | <i>30.9</i> | <i>51.0</i> | <i>18.3</i> |

Table 3.24.6

Ancestry by Birthplace of Parents: Selected Ancestry Groups, 2001 Census

| Ancestry | Australian Born | | | | | Overseas born | Not stated birthplace | Total responses |
|---------------|--------------------------------|-----------------------------|-----------------------------|----------------------------|---------------------------------|---------------|-----------------------|-----------------|
| | Both parents born in Australia | Mother Aust born/Father OSB | Father Aust born/Mother OSB | Both parents born overseas | Parent(s) birthplace not stated | | | |
| English | 10,232 | 2,038 | 1,266 | 1,348 | 309 | 5,556 | 351 | 21,100 |
| Australian | 12,736 | 2,034 | 1,409 | 309 | 362 | 635 | 384 | 17,869 |
| Irish | 6,264 | 825 | 527 | 377 | 164 | 1,815 | 156 | 10,128 |
| Italian | 487 | 329 | 132 | 963 | 31 | 1,466 | 77 | 3,485 |
| Scottish | 1,111 | 268 | 148 | 207 | 23 | 822 | 28 | 2,607 |
| German | 931 | 224 | 130 | 258 | 34 | 599 | 32 | 2,208 |
| Chinese | 122 | 84 | 59 | 288 | .. | 1,278 | 24 | 1,864 |
| Greek | 171 | 142 | 56 | 479 | 23 | 599 | 54 | 1,524 |
| New Zealander | 17 | 83 | 43 | 123 | .. | 533 | .. | 805 |
| Dutch | 58 | 120 | 50 | 146 | .. | 325 | .. | 711 |

Leichhardt LGA

(continued)

Table 3.24.7

Religious Affiliation by Gender, 2001 and 1996 Census

| Religion | Males | Females | Persons | % of population | 1996 Census | Change 1996-2001 | % change |
|-------------------------|---------------|---------------|---------------|-----------------|---------------|------------------|------------|
| Catholic | 7,683 | 8,994 | 16,677 | 27.2 | 16,302 | 375 | 2.3 |
| No Religion | 7,565 | 7,377 | 14,942 | 24.4 | 15,733 | -791 | -5.0 |
| Anglican | 4,841 | 5,746 | 10,587 | 17.3 | 10,265 | 322 | 3.1 |
| Orthodox | 864 | 880 | 1,744 | 2.8 | 1,734 | 10 | 0.6 |
| Uniting Church | 695 | 954 | 1,649 | 2.7 | 1,784 | -135 | -7.6 |
| Presbyterian & Reformed | 664 | 817 | 1,481 | 2.4 | 1,478 | 3 | 0.2 |
| Buddhism | 587 | 832 | 1,419 | 2.3 | 864 | 555 | 64.2 |
| Religious belief, nfd | 455 | 476 | 931 | 1.5 | 223 | 708 | 317.5 |
| Christian, nfd | 194 | 284 | 478 | 0.8 | 380 | 98 | 25.8 |
| Islam | 254 | 207 | 461 | 0.8 | 402 | 59 | 14.7 |
| Judaism | 176 | 220 | 396 | 0.6 | 350 | 46 | 13.1 |
| Lutheran | 180 | 202 | 382 | 0.6 | 374 | 8 | 2.1 |
| Baptist | 152 | 165 | 317 | 0.5 | 375 | -58 | -15.5 |
| Hinduism | 155 | 114 | 269 | 0.4 | 195 | 74 | 37.9 |
| Pentecostal | 88 | 108 | 196 | 0.3 | 175 | 21 | 12.0 |
| Nature Religions | 72 | 112 | 184 | 0.3 | 148 | 36 | 24.3 |
| Jehovah's Witnesses | 48 | 65 | 113 | 0.2 | 123 | -10 | -8.1 |
| Other Protestant | 50 | 60 | 110 | 0.2 | 94 | 16 | 17.0 |
| Other Christian | 42 | 56 | 98 | 0.2 | 77 | 21 | 27.3 |
| Salvation Army | 44 | 37 | 81 | 0.1 | 85 | -4 | -4.7 |
| Oriental Christian | 35 | 37 | 72 | 0.1 | 45 | 27 | 60.0 |
| Seventh-day Adventist | 16 | 39 | 55 | 0.1 | 57 | -2 | -3.5 |
| Latter Day Saints | 21 | 29 | 50 | 0.1 | 65 | -15 | -23.1 |
| Spiritualism | 10 | 28 | 38 | 0.1 | 53 | -15 | -28.3 |
| Chinese Religions | 22 | 4 | 26 | 0.0 | 32 | -6 | -18.8 |
| Churches of Christ | 9 | 16 | 25 | 0.0 | 45 | -20 | -44.4 |
| Sikhism | 10 | 13 | 23 | 0.0 | 27 | -4 | -14.8 |
| Japanese Religions | 9 | 13 | 22 | 0.0 | 17 | 5 | 29.4 |
| Brethren | 9 | 11 | 20 | 0.0 | 28 | -8 | -28.6 |
| Baha'i | 9 | 10 | 19 | 0.0 | 16 | 3 | 18.8 |
| Other religions | 122 | 91 | 213 | 0.3 | 198 | 15 | 7.6 |
| Inadequately described | 572 | 330 | 902 | 1.5 | 131 | 771 | 588.5 |
| Not stated | 3,558 | 3,790 | 7,348 | 12.0 | 5,598 | 1,750 | 31.3 |
| Total persons | 29,211 | 32,117 | 61,328 | 100.0 | 57,473 | 3,855 | 6.7 |