

Randwick LGA

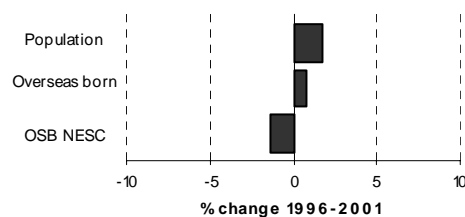
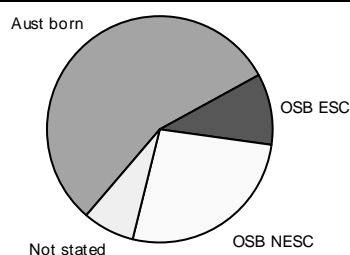


Table 3.33.1

Summary Indicators	2001 Census	% of population	1996 Census	Change 1996-2001	% change
Population	118,659	100.0	116,645	2,014	1.7
Australian born	66,567	56.1	68,929	-2,362	-3.4
Overseas born	43,045	36.3	42,714	331	0.8
Birthplace not stated	9,047	7.6	4,996	4,051	81.1
Overseas born - English speaking countries	11,995	10.1	11,236	759	6.8
Overseas born - non-English speaking countries	31,050	26.2	31,478	-428	-1.4
Aboriginal and/or Torres Strait Islanders	1,345	1.1	1,355	-10	-0.7
Language other than English spoken at home	34,137	28.8	34,278	-141	-0.4
Overseas born arrived since 1996	12,153	10.2			
Overseas born arrived since 1996 from NESC	8,886	7.5			

Table 3.33.2

Overseas Born: Birthplace by Gender, 2001 and 1996 Census

Birthplace	Males	Females	Persons	% of OSB	1996 Census	Change 1996-2001	% change
England	2,496	2,199	4,695	10.9	4,746	-51	-1.1
Indonesia	1,573	1,701	3,274	7.6	2,519	755	30.0
New Zealand	1,574	1,511	3,085	7.2	2,824	261	9.2
China (excl. SARs and Taiwan)	1,181	1,453	2,634	6.1	2,116	518	24.5
Hong Kong (SAR of China)	1,108	1,154	2,262	5.3	2,285	-23	-1.0
Greece	1,009	1,134	2,143	5.0	2,549	-406	-15.9
Malaysia	791	851	1,642	3.8	1,815	-173	-9.5
Italy	592	549	1,141	2.7	1,227	-86	-7.0
Ireland	537	505	1,042	2.4	947	95	10.0
South Africa	534	497	1,031	2.4	582	449	77.1
Scotland	450	387	837	1.9	951	-114	-12.0
Singapore	424	393	817	1.9	732	85	11.6
Egypt	383	424	807	1.9	989	-182	-18.4
Philippines	207	487	694	1.6	846	-152	-18.0
India	364	313	677	1.6	697	-20	-2.9
Germany	328	341	669	1.6	699	-30	-4.3
Russian Federation	293	368	661	1.5	792	-131	-16.5
United States of America	297	312	609	1.4	572	37	6.5
Thailand	253	340	593	1.4	407	186	45.7
Poland	272	301	573	1.3	686	-113	-16.5
Taiwan	251	301	552	1.3	324	228	70.4
Viet Nam	259	241	500	1.2	487	13	2.7
Korea, Republic of (South)	221	275	496	1.2	557	-61	-11.0
Lebanon	250	217	467	1.1	543	-76	-14.0
Ukraine	220	242	462	1.1	417	45	10.8
France	234	222	456	1.1	367	89	24.3
Chile	200	233	433	1.0	522	-89	-17.0
Hungary	203	216	419	1.0	498	-79	-15.9
Japan	133	260	393	0.9	404	-11	-2.7
Fiji	171	212	383	0.9	423	-40	-9.5
Other birthplaces	4,304	4,294	8,598	20.0	9,191	-593	-6.5
Total overseas born	21,112	21,933	43,045	100.0	42,714	331	0.8

Randwick LGA

(continued)

Table 3.33.3

Birthplace by Age: Selected Birthplace Groups, 2001 Census

Percentage in age group of each birthplace - total expressed as a number

Birthplace	Age 0-12	Age 13-24	Age 25-54	Age 55-64	Age 65+	Total
England	2.5	5.5	65.5	11.7	14.8	4,695
Indonesia	4.9	44.8	44.2	3.0	3.1	3,274
New Zealand	4.4	15.5	69.3	6.3	4.5	3,085
China (excl. SARs and Taiwan)	3.2	19.0	54.5	8.5	14.7	2,634
Hong Kong (SAR of China)	3.0	51.5	38.9	3.6	3.1	2,262
Greece	0.3	0.7	22.9	29.2	46.9	2,143
Malaysia	1.3	34.7	51.2	8.7	4.1	1,642
Italy	0.3	1.4	31.4	20.8	46.2	1,141
Ireland	0.8	8.5	71.0	9.1	10.6	1,042
South Africa	11.9	9.9	65.4	7.5	5.3	1,031

Table 3.33.4

Languages other than English Spoken at Home by Gender, 2001 and 1996 Census

Language	Males	Females	Persons	% of LOTE speakers	1996	Change	% change
					Census	1996-2001	
Greek	2,691	2,948	5,639	16.5	6,155	-516	-8.4
Cantonese	2,386	2,605	4,991	14.6	4,690	301	6.4
Mandarin	1,543	1,638	3,181	9.3	2,043	1,138	55.7
Indonesian	1,455	1,575	3,030	8.9	2,215	815	36.8
Italian	955	1,027	1,982	5.8	2,134	-152	-7.1
Spanish	809	875	1,684	4.9	2,020	-336	-16.6
Russian	729	799	1,528	4.5	1,587	-59	-3.7
Arabic	552	511	1,063	3.1	1,212	-149	-12.3
French	423	448	871	2.6	769	102	13.3
German	294	291	585	1.7	690	-105	-15.2
Portuguese	277	305	582	1.7	628	-46	-7.3
Thai	252	314	566	1.7	400	166	41.5
Polish	238	273	511	1.5	600	-89	-14.8
Korean	237	265	502	1.5	556	-54	-9.7
Tagalog (Filipino)	134	290	424	1.2	581	-157	-27.0
Vietnamese	204	204	408	1.2	295	113	38.3
Hungarian	175	222	397	1.2	499	-102	-20.4
Japanese	168	223	391	1.1	388	3	0.8
Croatian	191	199	390	1.1	390	0	0.0
Bengali	207	134	341	1.0	325	16	4.9
Hindi	160	148	308	0.9	310	-2	-0.6
Maltese	125	169	294	0.9	371	-77	-20.8
Serbian	131	162	293	0.9	301	-8	-2.7
Hebrew	100	101	201	0.6	202	-1	-0.5
Turkish	99	101	200	0.6	188	12	6.4
Hokkien	91	107	198	0.6	242	-44	-18.2
Chinese, nfd	89	104	193	0.6	391	-198	-50.6
Persian	99	82	181	0.5	342	-161	-47.1
Sinhalese	94	81	175	0.5	241	-66	-27.4
Assyrian	85	81	166	0.5	174	-8	-4.6
Other languages	1,440	1,422	2,862	8.4	3,339	-477	-14.3
Total LOTE speakers	16,433	17,704	34,137	100.0	34,278	-141	-0.4

Randwick LGA

(continued)

Table 3.33.5

English Language Competency by Age: Selected Language Groups, 2001 Census

Language	Age 0-12	Age 13-24	Age 25-54	Age 55-64	Age 65+	Total
Greek						
Speak English well/very well	393	647	2,161	660	915	4,776
Speak English not well/not at all	47	..	76	176	493	801
Total including not stated	452	659	2,262	843	1,424	5,640
<i>Percent not well/not at all</i>	<i>10.4</i>		<i>3.4</i>	<i>20.9</i>	<i>34.6</i>	<i>14.2</i>
Cantonese						
Speak English well/very well	310	1,653	1,702	216	157	4,038
Speak English not well/not at all	77	179	287	111	261	915
Total including not stated	392	1,849	2,004	327	421	4,993
<i>Percent not well/not at all</i>	<i>19.6</i>	<i>9.7</i>	<i>14.3</i>	<i>33.9</i>	<i>62.0</i>	<i>18.3</i>
Mandarin						
Speak English well/very well	211	1,083	1,323	76	32	2,725
Speak English not well/not at all	44	72	169	62	72	419
Total including not stated	258	1,168	1,511	141	107	3,185
<i>Percent not well/not at all</i>	<i>17.1</i>	<i>6.2</i>	<i>11.2</i>	<i>44.0</i>	<i>67.3</i>	<i>13.2</i>
Indonesian						
Speak English well/very well	227	1,310	1,099	39	42	2,717
Speak English not well/not at all	73	49	117	14	27	280
Total including not stated	310	1,368	1,228	56	69	3,031
<i>Percent not well/not at all</i>	<i>23.5</i>	<i>3.6</i>	<i>9.5</i>	<i>25.0</i>	<i>39.1</i>	<i>9.2</i>
Italian						
Speak English well/very well	75	142	725	269	470	1,681
Speak English not well/not at all	26	28	183	248
Total including not stated	85	152	779	300	666	1,982
<i>Percent not well/not at all</i>			<i>3.3</i>	<i>9.3</i>	<i>27.5</i>	<i>12.5</i>
Spanish						
Speak English well/very well	108	267	782	173	68	1,398
Speak English not well/not at all	12	10	95	46	96	259
Total including not stated	127	281	890	222	164	1,684
<i>Percent not well/not at all</i>	<i>9.4</i>	<i>3.6</i>	<i>10.7</i>	<i>20.7</i>	<i>58.5</i>	<i>15.4</i>
All speakers of languages other than English						
Speak English well/very well	2,379	7,571	13,896	2,494	2,693	29,033
Speak English not well/not at all	539	455	1,315	690	1,607	4,606
Total including not stated	3,079	8,101	15,383	3,221	4,358	34,142
<i>Percent not well/not at all</i>	<i>17.5</i>	<i>5.6</i>	<i>8.5</i>	<i>21.4</i>	<i>36.9</i>	<i>13.5</i>

Table 3.33.6

Ancestry by Birthplace of Parents: Selected Ancestry Groups, 2001 Census

Ancestry	Australian Born					Overseas born	Not stated birthplace	Total responses
	Both parents born in Australia		Both parents born overseas		Parent(s) birthplace not stated			
	Mother Aust born/Father OSB	Father Aust born/Mother OSB	Mother Aust born/Father OSB	Father Aust born/Mother OSB				
English	14,758	2,597	1,701	1,983	388	6,867	578	28,872
Australian	20,868	2,887	1,910	599	573	764	765	28,366
Irish	9,188	1,188	667	657	190	2,528	297	14,715
Chinese	215	156	168	1,525	51	10,577	203	12,895
Greek	1,216	723	282	2,430	119	2,778	171	7,719
Italian	886	463	184	1,128	57	1,563	112	4,393
German	1,257	299	171	395	36	985	46	3,189
Scottish	1,191	257	176	331	25	1,045	43	3,068
Russian	88	51	34	203	..	1,130	42	1,554
Polish	105	87	46	293	..	710	19	1,268

Randwick LGA*(continued)*

Table 3.33.7

Religious Affiliation by Gender, 2001 and 1996 Census

Religion	Males	Females	Persons	% of population	1996 Census	Change 1996-2001	% change
Catholic	17,673	19,949	37,622	31.7	38,934	-1,312	-3.4
Anglican	8,630	9,826	18,456	15.6	20,544	-2,088	-10.2
No Religion	9,245	8,096	17,341	14.6	18,800	-1,459	-7.8
Orthodox	4,215	4,484	8,699	7.3	8,959	-260	-2.9
Buddhism	2,025	2,191	4,216	3.6	2,354	1,862	79.1
Judaism	1,723	1,926	3,649	3.1	3,176	473	14.9
Presbyterian & Reformed	1,521	1,696	3,217	2.7	3,528	-311	-8.8
Uniting Church	1,120	1,271	2,391	2.0	2,692	-301	-11.2
Islam	1,022	813	1,835	1.5	2,031	-196	-9.7
Religious belief, nfd	631	616	1,247	1.1	244	1,003	411.1
Christian, nfd	460	607	1,067	0.9	796	271	34.0
Baptist	480	569	1,049	0.9	1,002	47	4.7
Hinduism	396	341	737	0.6	718	19	2.6
Lutheran	287	285	572	0.5	606	-34	-5.6
Pentecostal	252	309	561	0.5	418	143	34.2
Oriental Christian	165	149	314	0.3	353	-39	-11.0
Other Protestant	110	102	212	0.2	242	-30	-12.4
Jehovah's Witnesses	79	112	191	0.2	264	-73	-27.7
Latter Day Saints	65	75	140	0.1	199	-59	-29.6
Nature Religions	41	62	103	0.1	77	26	33.8
Other Christian	54	45	99	0.1	94	5	5.3
Salvation Army	33	58	91	0.1	103	-12	-11.7
Sikhism	37	49	86	0.1	80	6	7.5
Seventh-day Adventist	34	40	74	0.1	113	-39	-34.5
Chinese Religions	41	25	66	0.1	42	24	57.1
Churches of Christ	28	35	63	0.1	104	-41	-39.4
Spiritualism	16	42	58	0.0	39	19	48.7
Brethren	26	25	51	0.0	45	6	13.3
Baha'i	16	12	28	0.0	35	-7	-20.0
Theism, nec	13	10	23	0.0	17	6	35.3
Other religions	72	57	129	0.1	129	0	0.0
Inadequately described	664	314	978	0.8	137	841	613.9
Not stated	7,097	6,197	13,294	11.2	9,770	3,524	36.1
Total persons	58,271	60,388	118,659	100.0	116,645	2,014	1.7