

Tamworth LGA

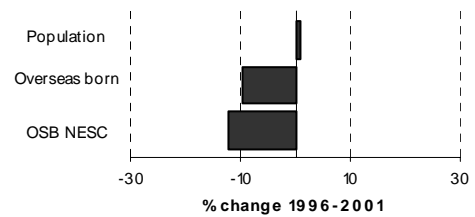
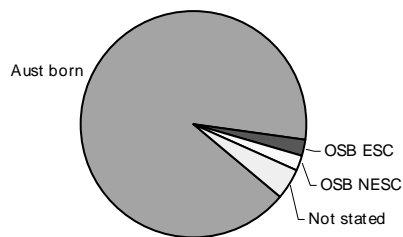


Table 4.91.1

Summary Indicators	2001 Census	% of population	1996 Census	Change 1996-2001	% change
Population	35,222	100.0	34,879	343	1.0
Australian born	32,064	91.0	32,008	56	0.2
Overseas born	1,639	4.7	1,817	-178	-9.8
Birthplace not stated	1,519	4.3	1,060	459	43.3
Overseas born - English speaking countries	950	2.7	1,034	-84	-8.1
Overseas born - non-English speaking countries	689	2.0	783	-94	-12.0
Aboriginal and/or Torres Strait Islanders	2,184	6.2	1,618	566	35.0
Language other than English spoken at home	612	1.7	713	-101	-14.2
Overseas born arrived since 1996	208	0.6			
Overseas born arrived since 1996 from NESC	117	0.3			

Table 4.91.2

Overseas Born: Birthplace by Gender, 2001 and 1996 Census

Birthplace	Males	Females	Persons	% of OSB	1996 Census	Change 1996-2001	% change
England	251	242	493	30.1	549	-56	-10.2
New Zealand	107	102	209	12.8	235	-26	-11.1
Scotland	42	42	84	5.1	92	-8	-8.7
Netherlands	33	32	65	4.0	76	-11	-14.5
Singapore	26	31	57	3.5	17	40	235.3
Germany	24	32	56	3.4	75	-19	-25.3
Philippines	6	40	46	2.8	40	6	15.0
United States of America	24	18	42	2.6	47	-5	-10.6
China (excl. SARs and Taiwan)	21	17	38	2.3	71	-33	-46.5
Italy	24	14	38	2.3	42	-4	-9.5
South Africa	21	17	38	2.3	20	18	90.0
Ireland	17	12	29	1.8	33	-4	-12.1
Malaysia	7	16	23	1.4	27	-4	-14.8
Papua New Guinea	13	10	23	1.4	24	-1	-4.2
Canada	6	16	22	1.3	27	-5	-18.5
Other birthplaces	193	183	376	22.9	442	-66	-14.9
Total overseas born	815	824	1,639	100.0	1,817	-178	-9.8

Tamworth LGA

(continued)

Table 4.91.3
Religious Affiliation by Gender, 2001 and 1996 Census

Religion	Males	Females	Persons	% of population	1996 Census	Change 1996-2001	% change
Anglican	6,455	7,212	13,667	38.8	13,452	215	1.6
Catholic	4,659	5,271	9,930	28.2	9,800	130	1.3
No Religion	1,385	1,053	2,438	6.9	2,509	-71	-2.8
Uniting Church	1,030	1,286	2,316	6.6	2,549	-233	-9.1
Presbyterian & Reformed	954	1,060	2,014	5.7	2,149	-135	-6.3
Christian, nfd	208	260	468	1.3	245	223	91.0
Baptist	160	191	351	1.0	341	10	2.9
Pentecostal	132	162	294	0.8	382	-88	-23.0
Jehovah's Witnesses	92	105	197	0.6	188	9	4.8
Salvation Army	77	87	164	0.5	140	24	17.1
Latter Day Saints	62	64	126	0.4	174	-48	-27.6
Other religions	449	446	895	2.5	762	133	17.5
Inadequately described	57	29	86	0.2	16	70	437.5
Not stated	1,207	1,069	2,276	6.5	2,172	104	4.8
Total persons	16,927	18,295	35,222	100.0	34,879	343	1.0

Table 4.91.4
Ancestry by Birthplace of Parents: Selected Ancestry Groups, 2001 Census

Ancestry	Australian Born					Overseas born	Not stated birthplace	Total responses
	Both parents born in Australia		Both parents born overseas		Parent(s) birthplace not stated			
	Mother Aust born/Father born	Father Aust born/Mother born	Mother Aust born/Father born	Father Aust born/Mother born				
Australian	16,644	692	450	36	467	99	534	18,922
English	9,932	710	469	259	289	660	308	12,627
Irish	3,184	143	118	56	74	118	80	3,773
German	881	65	36	45	28	80	24	1,159
Scottish	515	49	45	46	11	89	..	763
Italian	160	33	..	42	..	46	12	306
Dutch	53	42	24	49	..	85	..	262
Chinese	71	18	..	21	..	124	..	250
New Zealander	15	28	15	54	..	121
Australian Aboriginal	107	117