

Penrith LGA

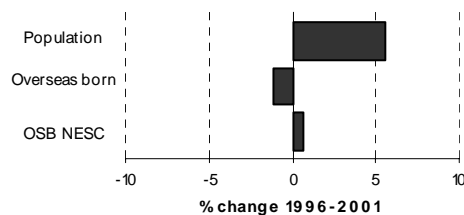
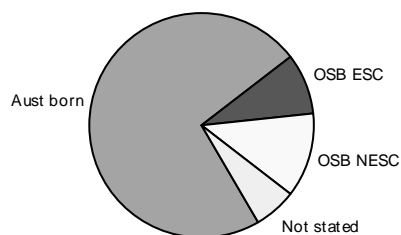


Table 3.31.1

Summary Indicators	2001 Census	% of population	1996 Census	Change 1996-2001	% change
Population	172,350	100.0	163,171	9,179	5.6
Australian born	125,408	72.8	121,101	4,307	3.6
Overseas born	36,578	21.2	36,984	-406	-1.1
Birthplace not stated	10,364	6.0	5,099	5,265	103.3
Overseas born - English speaking countries	15,160	8.8	15,706	-546	-3.5
Overseas born - non-English speaking countries	21,418	12.4	21,278	140	0.7
Aboriginal and/or Torres Strait Islanders	3,432	2.0	2,758	674	24.4
Language other than English spoken at home	22,584	13.1	21,688	896	4.1
Overseas born arrived since 1996	3,741	2.2			
Overseas born arrived since 1996 from NESC	2,403	1.4			

Table 3.31.2

Overseas Born: Birthplace by Gender, 2001 and 1996 Census

Birthplace	Males	Females	Persons	% of OSB	1996 Census	Change 1996-2001	% change
England	4,196	4,071	8,267	22.6	9,255	-988	-10.7
New Zealand	1,355	1,297	2,652	7.3	1,972	680	34.5
Philippines	1,065	1,467	2,532	6.9	2,417	115	4.8
Scotland	821	802	1,623	4.4	1,711	-88	-5.1
India	724	711	1,435	3.9	1,426	9	0.6
Malta	778	650	1,428	3.9	1,485	-57	-3.8
Germany	574	572	1,146	3.1	1,235	-89	-7.2
Italy	600	464	1,064	2.9	1,140	-76	-6.7
Fiji	444	483	927	2.5	736	191	26.0
Netherlands	430	404	834	2.3	951	-117	-12.3
South Africa	395	398	793	2.2	715	78	10.9
Sri Lanka	380	402	782	2.1	873	-91	-10.4
Croatia	383	362	745	2.0	748	-3	-0.4
Ireland	389	343	732	2.0	781	-49	-6.3
Egypt	312	270	582	1.6	551	31	5.6
Greece	298	270	568	1.6	631	-63	-10.0
Lebanon	306	255	561	1.5	487	74	15.2
Yugoslavia, Federal Republic of	290	255	545	1.5	n.c.	n.c.	n.c.
Poland	233	274	507	1.4	597	-90	-15.1
China (excl. SARs and Taiwan)	204	248	452	1.2	401	51	12.7
Northern Ireland	202	189	391	1.1	441	-50	-11.3
Malaysia	149	180	329	0.9	447	-118	-26.4
Chile	132	143	275	0.8	272	3	1.1
Samoa	135	126	261	0.7	164	97	59.1
United States of America	135	121	256	0.7	260	-4	-1.5
Wales	139	114	253	0.7	309	-56	-18.1
Pakistan	141	107	248	0.7	245	3	1.2
Iran	135	106	241	0.7	262	-21	-8.0
Cyprus	117	116	233	0.6	239	-6	-2.5
Hungary	125	102	227	0.6	237	-10	-4.2
Other birthplaces	2,801	2,888	5,689	15.6	n.c.	n.c.	n.c.
Total overseas born	18,388	18,190	36,578	100.0	36,984	-406	-1.1

Penrith LGA

(continued)

Table 3.31.3

Birthplace by Age: Selected Birthplace Groups, 2001 Census

Percentage in age group of each birthplace - total expressed as a number

Birthplace	Age 0-12	Age 13-24	Age 25-54	Age 55-64	Age 65+	Total
England	1.4	5.3	59.3	18.1	15.9	8,267
New Zealand	12.2	20.1	59.1	5.2	3.4	2,652
Philippines	5.0	21.8	62.6	5.4	5.3	2,532
Scotland	0.8	4.0	59.4	18.7	17.1	1,623
India	8.0	12.8	59.1	10.4	9.7	1,435
Malta	0.5	2.3	58.8	24.4	14.0	1,428
Germany	1.2	2.8	52.4	22.5	21.0	1,146
Italy	0.3	1.3	47.5	25.0	25.9	1,064
Fiji	6.1	22.5	60.5	5.3	5.5	927
Netherlands	0.4	2.0	48.8	22.5	26.3	834

Table 3.31.4

Languages other than English Spoken at Home by Gender, 2001 and 1996 Census

Language	Males	Females	Persons	% of LOTE speakers	1996	Change	% change
					Census	1996-2001	
Tagalog (Filipino)	991	1,253	2,244	9.9	2,111	133	6.3
Arabic	1,148	1,034	2,182	9.7	1,780	402	22.6
Italian	887	782	1,669	7.4	1,684	-15	-0.9
Maltese	747	700	1,447	6.4	1,489	-42	-2.8
Greek	709	723	1,432	6.3	1,447	-15	-1.0
Croatian	632	624	1,256	5.6	1,193	63	5.3
Spanish	533	553	1,086	4.8	1,030	56	5.4
Hindi	459	505	964	4.3	806	158	19.6
Polish	294	318	612	2.7	702	-90	-12.8
Cantonese	305	298	603	2.7	634	-31	-4.9
German	267	327	594	2.6	853	-259	-30.4
Turkish	281	249	530	2.3	528	2	0.4
Punjabi	237	212	449	2.0	306	143	46.7
Samoan	202	212	414	1.8	264	150	56.8
Serbian	198	192	390	1.7	380	10	2.6
Netherlandic	164	210	374	1.7	409	-35	-8.6
Sinhalese	185	180	365	1.6	337	28	8.3
Tamil	171	171	342	1.5	470	-128	-27.2
Hungarian	165	167	332	1.5	368	-36	-9.8
Persian	172	145	317	1.4	265	52	19.6
Mandarin	137	160	297	1.3	179	118	65.9
Urdu	160	132	292	1.3	277	15	5.4
French	136	153	289	1.3	335	-46	-13.7
Vietnamese	118	119	237	1.0	183	54	29.5
Assyrian	108	99	207	0.9	170	37	21.8
Macedonian	101	96	197	0.9	168	29	17.3
Portuguese	73	101	174	0.8	171	3	1.8
South Slavic, nfd	83	71	154	0.7	203	-49	-24.1
Indonesian	58	88	146	0.6	119	27	22.7
Russian	60	76	136	0.6	104	32	30.8
Other languages	1,380	1,473	2,853	12.6	2,723	130	4.8
Total LOTE speakers	11,161	11,423	22,584	100.0	21,688	896	4.1

Penrith LGA

(continued)

Table 3.31.5

English Language Competency by Age: Selected Language Groups, 2001 Census

Language	Age 0-12	Age 13-24	Age 25-54	Age 55-64	Age 65+	Total
Tagalog (Filipino)						
Speak English well/very well	202	404	1,326	118	80	2,130
Speak English not well/not at all	17	10	18	..	40	88
Total including not stated	225	420	1,357	121	120	2,243
<i>Percent not well/not at all</i>	7.6	2.4	1.3		33.3	3.9
Arabic						
Speak English well/very well	421	480	875	98	41	1,915
Speak English not well/not at all	41	20	113	25	39	238
Total including not stated	478	503	997	123	83	2,184
<i>Percent not well/not at all</i>	8.6	4.0	11.3	20.3	47.0	10.9
Italian						
Speak English well/very well	90	159	818	210	186	1,463
Speak English not well/not at all	10	10	39	39	77	175
Total including not stated	106	172	873	253	266	1,670
<i>Percent not well/not at all</i>	9.4	5.8	4.5	15.4	28.9	10.5
Maltese						
Speak English well/very well	61	140	791	220	112	1,324
Speak English not well/not at all	31	15	40	95
Total including not stated	70	148	838	240	152	1,448
<i>Percent not well/not at all</i>			3.7	6.3	26.3	6.6
Greek						
Speak English well/very well	158	217	620	128	87	1,210
Speak English not well/not at all	23	..	50	56	72	204
Total including not stated	184	220	677	188	163	1,432
<i>Percent not well/not at all</i>	12.5		7.4	29.8	44.2	14.2
Croatian						
Speak English well/very well	141	199	536	125	52	1,053
Speak English not well/not at all	12	..	50	62	54	178
Total including not stated	165	202	592	190	109	1,258
<i>Percent not well/not at all</i>	7.3		8.4	32.6	49.5	14.1
All speakers of languages other than English						
Speak English well/very well	2,500	3,525	10,273	1,842	1,463	19,603
Speak English not well/not at all	438	99	857	413	667	2,474
Total including not stated	3,159	3,685	11,278	2,281	2,150	22,553
<i>Percent not well/not at all</i>	13.9	2.7	7.6	18.1	31.0	11.0

Table 3.31.6

Ancestry by Birthplace of Parents: Selected Ancestry Groups, 2001 Census

Ancestry	Australian Born					Overseas born	Not stated birthplace	Total responses
	Both parents born in Australia	Mother Aust born/Father OSB	Father Aust born/Mother OSB	Both parents born overseas	Parent(s) birthplace not stated			
Australian	50,526	6,072	3,965	1,006	1,625	670	2,032	65,896
English	30,597	5,461	3,733	3,687	1,072	10,128	1,619	56,297
Irish	9,892	1,376	875	854	295	2,187	383	15,862
Maltese	1,158	633	323	1,859	79	1,368	124	5,544
Italian	1,453	805	292	1,423	89	1,276	161	5,499
German	2,248	587	336	693	81	1,223	115	5,283
Scottish	1,556	477	357	529	57	1,486	85	4,547
Filipino	..	46	97	574	34	2,379	125	3,264
Dutch	446	385	268	671	31	981	62	2,844
Indian	26	39	42	451	21	1,936	77	2,592

Penrith LGA

(continued)

Table 3.31.7

Religious Affiliation by Gender, 2001 and 1996 Census

Religion	Males	Females	Persons	% of population	1996 Census	Change 1996-2001	% change
Catholic	29,054	30,417	59,471	34.5	56,406	3,065	5.4
Anglican	21,798	23,178	44,976	26.1	44,689	287	0.6
No Religion	9,368	7,532	16,900	9.8	17,467	-567	-3.2
Uniting Church	2,949	3,398	6,347	3.7	6,918	-571	-8.3
Presbyterian & Reformed	2,795	3,068	5,863	3.4	6,572	-709	-10.8
Orthodox	1,706	1,661	3,367	2.0	3,074	293	9.5
Islam	1,285	1,095	2,380	1.4	1,902	478	25.1
Pentecostal	1,087	1,173	2,260	1.3	1,559	701	45.0
Baptist	1,076	1,174	2,250	1.3	2,272	-22	-1.0
Christian, nfd	947	1,055	2,002	1.2	1,578	424	26.9
Hinduism	749	773	1,522	0.9	1,491	31	2.1
Religious belief, nfd	721	700	1,421	0.8	185	1,236	668.1
Buddhism	559	593	1,152	0.7	672	480	71.4
Lutheran	529	546	1,075	0.6	1,099	-24	-2.2
Oriental Christian	374	366	740	0.4	619	121	19.5
Salvation Army	296	405	701	0.4	669	32	4.8
Latter Day Saints	317	354	671	0.4	652	19	2.9
Jehovah's Witnesses	288	362	650	0.4	680	-30	-4.4
Sikhism	255	217	472	0.3	319	153	48.0
Churches of Christ	176	215	391	0.2	474	-83	-17.5
Other Protestant	185	198	383	0.2	339	44	13.0
Seventh-day Adventist	189	174	363	0.2	377	-14	-3.7
Brethren	166	155	321	0.2	377	-56	-14.9
Other Christian	116	117	233	0.1	216	17	7.9
Nature Religions	45	106	151	0.1	46	105	228.3
Baha'i	52	45	97	0.1	91	6	6.6
Spiritualism	20	57	77	0.0	66	11	16.7
Judaism	31	31	62	0.0	82	-20	-24.4
Chinese Religions	9	4	13	0.0	19	-6	-31.6
Druse	6	7	13	0.0	..		
Other religions	73	52	125	0.1	131	-6	-4.6
Inadequately described	508	288	796	0.5	123	673	547.2
Not stated	7,890	7,215	15,105	8.8	12,007	3,098	25.8
Total persons	85,619	86,731	172,350	100.0	163,171	9,179	5.6