

Maitland LGA

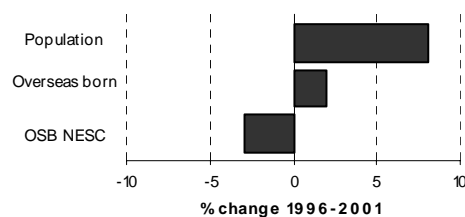
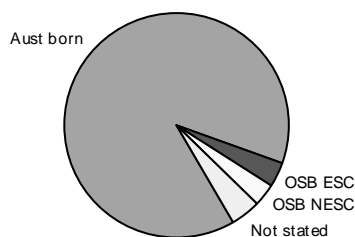


Table 2.4.1

Summary Indicators	2001 Census	% of population	1996 Census	Change 1996-2001	% change
Population	54,397	100.0	50,324	4,073	8.1
Australian born	48,310	88.8	45,388	2,922	6.4
Overseas born	3,704	6.8	3,634	70	1.9
Birthplace not stated	2,383	4.4	1,307	1,076	82.3
Overseas born - English speaking countries	2,040	3.8	1,920	120	6.3
Overseas born - non-English speaking countries	1,664	3.1	1,714	-50	-2.9
Aboriginal and/or Torres Strait Islanders	1,222	2.2	865	357	41.3
Language other than English spoken at home	1,265	2.3	1,288	-23	-1.8
Overseas born arrived since 1996	296	0.5			
Overseas born arrived since 1996 from NESC	114	0.2			

Table 2.4.2

Overseas Born: Birthplace by Gender, 2001 and 1996 Census

Birthplace	Males	Females	Persons	% of OSB	1996	Change	
					Census	1996-2001	% change
England	575	536	1,111	30.0	1,086	25	2.3
New Zealand	218	171	389	10.5	346	43	12.4
Germany	147	148	295	8.0	299	-4	-1.3
Scotland	109	112	221	6.0	232	-11	-4.7
Poland	60	83	143	3.9	176	-33	-18.8
Philippines	25	114	139	3.8	138	1	0.7
Netherlands	61	55	116	3.1	126	-10	-7.9
China (excl. SARs and Taiwan)	41	42	83	2.2	112	-29	-25.9
South Africa	44	37	81	2.2	46	35	76.1
United States of America	28	37	65	1.8	48	17	35.4
Ireland	32	28	60	1.6	55	5	9.1
Malaysia	26	30	56	1.5	59	-3	-5.1
Austria	26	23	49	1.3	42	7	16.7
India	25	24	49	1.3	52	-3	-5.8
Wales	25	23	48	1.3	52	-4	-7.7
Yugoslavia, Federal Republic of	25	22	47	1.3	n.c.	n.c.	n.c.
Hong Kong (SAR of China)	24	20	44	1.2	49	-5	-10.2
Italy	25	19	44	1.2	50	-6	-12.0
Portugal	21	14	35	0.9	41	-6	-14.6
Greece	18	13	31	0.8	26	5	19.2
Canada	17	13	30	0.8	24	6	25.0
Samoa	16	13	29	0.8	27	2	7.4
Northern Ireland	15	11	26	0.7	31	-5	-16.1
Papua New Guinea	10	10	20	0.5	16	4	25.0
Fiji	5	14	19	0.5	17	2	11.8
Ukraine	7	11	18	0.5	26	-8	-30.8
Croatia	9	8	17	0.5	13	4	30.8
Malta	10	7	17	0.5	15	2	13.3
Singapore	7	10	17	0.5	15	2	13.3
Thailand	7	10	17	0.5	13	4	30.8
Other birthplaces	186	202	388	10.5	n.c.	n.c.	n.c.
Total overseas born	1,844	1,860	3,704	100.0	3,634	70	1.9

Maitland LGA

(continued)

Table 2.4.3

Birthplace by Age: Selected Birthplace Groups, 2001 Census

Percentage in age group of each birthplace - total expressed as a number

Birthplace	Age 0-12	Age 13-24	Age 25-54	Age 55-64	Age 65+	Total
England	2.0	5.8	53.6	18.5	20.3	1,111
New Zealand	6.2	12.3	64.8	10.8	5.9	389
Germany	2.0	0.0	52.9	24.4	20.7	295
Scotland	1.8	4.5	48.4	16.7	28.5	221
Poland	0.0	2.1	22.9	13.2	61.8	143
Philippines	8.6	18.0	63.3	5.8	4.3	139
Netherlands	0.0	2.6	39.3	29.9	28.2	116
China (excl. SARs and Taiwan)	3.5	9.4	49.4	14.1	23.5	83
South Africa	13.8	23.8	50.0	0.0	12.5	81
United States of America	9.2	7.7	61.5	13.8	7.7	65

Table 2.4.4

Languages other than English Spoken at Home by Gender, 2001 and 1996 Census

Language	Males	Females	Persons	% of LOTE speakers	1996	Change	% change
					Census	1996-2001	
Cantonese	87	92	179	14.2	199	-20	-10.1
Polish	76	103	179	14.2	185	-6	-3.2
German	59	64	123	9.7	188	-65	-34.6
Italian	38	35	73	5.8	52	21	40.4
Tagalog (Filipino)	14	57	71	5.6	73	-2	-2.7
Greek	32	25	57	4.5	50	7	14.0
Arabic	23	30	53	4.2	40	13	32.5
Netherlandic	15	18	33	2.6	34	-1	-2.9
Samoan	17	16	33	2.6	30	3	10.0
Portuguese	15	14	29	2.3	37	-8	-21.6
Spanish	15	11	26	2.1	31	-5	-16.1
Ukrainian	7	17	24	1.9	29	-5	-17.2
Vietnamese	11	11	22	1.7	23	-1	-4.3
French	11	9	20	1.6	18	2	11.1
Serbian	8	12	20	1.6
Croatian	7	9	16	1.3	18	-2	-11.1
Thai	7	9	16	1.3	13	3	23.1
Russian	5	9	14	1.1	11	3	27.3
Hindi	6	7	13	1.0	11	2	18.2
Sign Languages, nfd	6	6	12	0.9
Romanian	5	5	10	0.8	14	-4	-28.6
Other languages	125	117	242	19.1	232	10	4.3
Total LOTE speakers	589	676	1,265	100.0	1,288	-23	-1.8

Maitland LGA

(continued)

Table 2.4.5

English Language Competency by Age: Selected Language Groups, 2001 Census

Language	Age 0-12	Age 13-24	Age 25-54	Age 55-64	Age 65+	Total
Cantonese						
Speak English well/very well	25	33	31	95
Speak English not well/not at all	37	10	27	82
Total including not stated	30	39	71	13	30	183
<i>Percent not well/not at all</i>			52.1	76.9	90.0	44.8
Polish						
Speak English well/very well	..	11	65	..	65	156
Speak English not well/not at all	15	21
Total including not stated	..	11	71	..	80	177
<i>Percent not well/not at all</i>					18.8	11.9
German						
Speak English well/very well	10	..	34	24	47	119
Speak English not well/not at all
Total including not stated	13	..	34	24	50	125
<i>Percent not well/not at all</i>						
Italian						
Speak English well/very well	36	..	12	65
Speak English not well/not at all
Total including not stated	39	..	15	71
<i>Percent not well/not at all</i>						
Tagalog (Filipino)						
Speak English well/very well	..	11	43	70
Speak English not well/not at all
Total including not stated	..	11	43	70
<i>Percent not well/not at all</i>						
Greek						
Speak English well/very well	28	46
Speak English not well/not at all
Total including not stated	31	..	12	55
<i>Percent not well/not at all</i>						
All speakers of languages other than English						
Speak English well/very well	114	144	475	104	197	1,034
Speak English not well/not at all	30	14	72	24	68	208
Total including not stated	164	161	553	128	268	1,274
<i>Percent not well/not at all</i>	18.3	8.7	13.0	18.8	25.4	16.3

Table 2.4.6

Ancestry by Birthplace of Parents: Selected Ancestry Groups, 2001 Census

Ancestry	Australian Born					Overseas born	Not stated birthplace	Total responses
	Both parents born in Australia	Mother Aust born/Father OSB	Father Aust born/Mother OSB	Both parents born overseas	Parent(s) birthplace not stated			
Australian	23,816	1,311	941	113	589	172	838	27,780
English	15,275	1,317	833	483	423	1,469	549	20,349
Irish	4,450	267	176	83	101	268	102	5,447
German	1,382	171	114	131	27	255	39	2,119
Scottish	793	167	89	90	17	208	11	1,375
Polish	121	47	24	165	..	223	10	597
Italian	228	84	32	83	..	85	13	528
Dutch	136	67	56	89	..	138	10	503
Chinese	54	16	..	48	..	165	12	304
Welsh	124	30	20	12	..	55	..	247

Maitland LGA

(continued)

Table 2.4.7

Religious Affiliation by Gender, 2001 and 1996 Census

Religion	Males	Females	Persons	% of population	1996 Census	Change 1996-2001	% change
Anglican	8,468	9,038	17,506	32.2	16,522	984	6.0
Catholic	7,988	8,452	16,440	30.2	15,215	1,225	8.1
No Religion	2,685	2,226	4,911	9.0	4,471	440	9.8
Uniting Church	2,107	2,404	4,511	8.3	4,431	80	1.8
Presbyterian & Reformed	1,151	1,234	2,385	4.4	2,515	-130	-5.2
Baptist	603	635	1,238	2.3	1,030	208	20.2
Christian, nfd	272	286	558	1.0	401	157	39.2
Salvation Army	229	285	514	0.9	445	69	15.5
Religious belief, nfd	187	186	373	0.7	65	308	473.8
Pentecostal	175	187	362	0.7	333	29	8.7
Orthodox	94	104	198	0.4	169	29	17.2
Lutheran	86	102	188	0.3	188	0	0.0
Jehovah's Witnesses	89	98	187	0.3	203	-16	-7.9
Churches of Christ	85	97	182	0.3	231	-49	-21.2
Seventh-day Adventist	69	78	147	0.3	138	9	6.5
Buddhism	66	66	132	0.2	59	73	123.7
Latter Day Saints	48	77	125	0.2	131	-6	-4.6
Other Protestant	39	60	99	0.2	123	-24	-19.5
Islam	44	36	80	0.1	58	22	37.9
Brethren	39	36	75	0.1	73	2	2.7
Nature Religions	10	36	46	0.1	..		
Other Christian	21	18	39	0.1	32	7	21.9
Hinduism	17	17	34	0.1	35	-1	-2.9
Spiritualism	12	14	26	0.0	19	7	36.8
Judaism	9	7	16	0.0	17	-1	-5.9
Other religions	33	40	73	0.1	76	-3	-3.9
Inadequately described	133	68	201	0.4	17	184	1,082.4
Not stated	1,933	1,818	3,751	6.9	3,327	424	12.7
Total persons	26,692	27,705	54,397	100.0	50,324	4,073	8.1